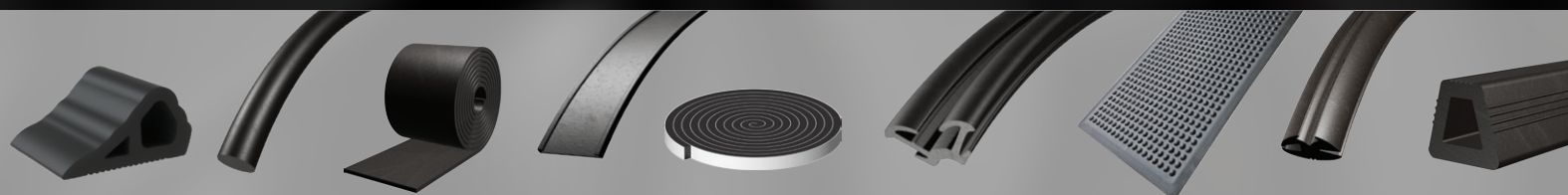




2025

INDUSTRIAL RANGE CATALOGUE

alp.nz



About Us

ALP OZ are leaders in the manufacture of industrial rubber products, auto glass rubbers and tools, and body shop tools.

We are an Australian family owned company with over 75 years of hands on professional experience in the industry.

Our Mission, Vision & Values

Our mission is to help, educate, and problem solve by listening to and understanding our customers' requirements, finding out what the industry needs most whilst delivering quality products at affordable prices.

ISO 9001 Certification

We are proud to have been accredited with the world's most recognised Quality Management standard – ISO 9001:2015. This ensures our products and services meet the needs of our customers, helping to improve the overall performance, maintain a high level of quality, and provide strong customer service.



The benefits and advantages that flow to our customers as a result of our successful implementation of ISO 9001 include:

- ✳ Better quality products and service
- ✳ More reliable delivery scheduling
- ✳ Mistake proofing
- ✳ Improved communications
- ✳ Constant improvement on current processes
- ✳ Standards maintained by annual assessments.

Product Catalogues

For the latest version of all our catalogues please visit alpoz.com.au/catalogues/

Our Quality Policy

At ALP OZ quality is an integral part of our business. We strive to achieve sustainable growth through consistently satisfying the diverse needs and expectations of our customers. Our aim is to provide products and services that meet or exceed expectations, deliver more value to our clients, responding to customers needs. We embrace new ideas, technology and innovation and strive for continuous improvement setting the bar high to maintain our strong reputation within the industry.

Industry Knowledge

With over 75 years hands on professional experience in the Industrial Rubber industry we are qualified industry experts providing technical support for the products we sell.

Extensive Product Range And Stock

Offering a comprehensive range of rubber products our warehouse carries over 1000 line items dedicated to the users of Industrial Rubber.

New Products & Continuous Improvement

ALP OZ continuously review our range, working with our partners on new products to improve both our business and our customers' businesses. With the growing relationships internationally we are regularly exposed to new technology, product improvements and new products. We have access to Australian and overseas facilities where we can design, test and create unique products to suit your business. Our sales team can work with you from beginning to end on your new product development projects.

Prompt Service & Delivery

We pride ourselves on our high level of customer service and prompt response to all product enquiries. We aim to send all orders of stock items out on a same day service if received by 3:00pm AEST.

To place orders please contact our customer service department on 03 9703 1522 or email orders to sales@alpoz.com.au.

Terms & Conditions

For full Terms & Conditions please visit <https://alpoz.com.au/terms>

All product returns must be approved prior by ALP OZ Auto Moulds and be within 14 days from receipt of delivery. Incorrectly ordered product returns may be subject to a restocking fee. Returned goods shall be in their original and unmarked condition, complete with any instruction sheets supplied. The following goods cannot be returned for credit under any conditions:

- Any goods specially made, including items cut to length
- Any goods used, altered or damaged by the purchaser
- Any goods having an invoice value of \$10 or less
- Any goods especially indented and which are not normal stock lines

All product returns must be freight prepaid by the sender.

All orders are to be prepaid unless trading terms are agreed prior by ALP OZ Auto Moulds.

Orders discrepancies must be reported to ALP OZ Auto Moulds within 3 days to ensure they are resolved ASAP.

The minimum order value before freight for non-account customers is \$50.

Prices and availability are subject to change without notice.

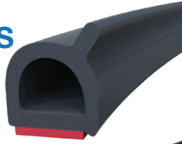
The supply of items may vary from time to time from the actual images shown in this catalogue.

Any unauthorised copying, duplicating or transmitting of this publication or any part thereof is strictly prohibited unless prior consent is given in writing by ALP OZ Auto Moulds. Any infringement of copyright may be subject to legal liability.



SELF-ADHESIVE SPONGE SEALS

Page 4



SELF-ADHESIVE WEATHER STRIP

Page 5



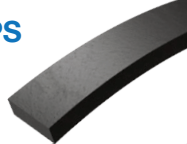
SELF-ADHESIVE FOAM TAPES

Page 6



RECTANGULAR SPONGE STRIPS

Page 7



ROUND CORD

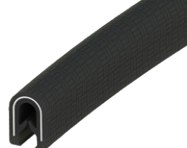
Page 8

- ✱ EPDM Sponge
- ✱ Solid NBR Rubber



PINCHWELD TRIMS

Page 9



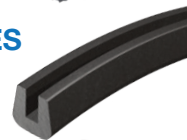
PINCHWELD CO-EXTRUSIONS

Page 10-11



SOLID EPDM RUBBER PROFILES

Page 12-13



INSERTION STRIPS

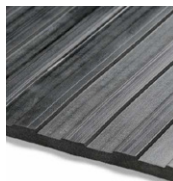
Page 14



RUBBER SHEET AND MATTING

Page 15-22

- ✱ Reinforced NR/SBR Sheet Rubber
- ✱ Checker Plate SBR Matting
- ✱ Ribbed SBR Sheet Matting
- ✱ Studded / Coin Rubber Matting
- ✱ Horse Float Rubber / Hammer Matting
- ✱ Anti Fatigue Non-Slip Mat ✱ Anti Vibration Pad
- ✱ Gym Mat ✱ Ute Matting ✱ Moulded Ute Tray Mats
- ✱ Tube Matting



WHEEL ARCH FLARES

Page 23



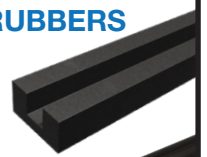
FLOCKED BAILEY CHANNEL

Page 24



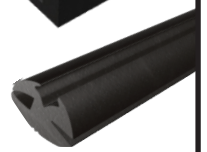
GLAZING TRUCK PROTECTIVE RUBBERS

Page 25



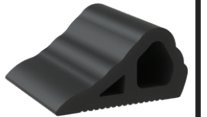
GLAZING RUBBERS

Page 26-27



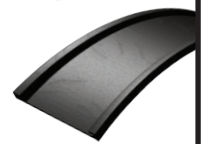
WHEEL CHOCKS

Page 28



TANK STRAPS

Page 29



DOCKING RUBBERS

Page 30



BUMP STOPS / BUFFERS

Page 31



MUDFLAPS

Page 31



GROMMETS

Page 32



BENDED RUBBER HOSES

Page 33



SEALANTS & ADHESIVES

Page 30-31



CUTTING TOOLS & BLADES

Page 36-37



LOCKING STRIP TOOLS

Page 38



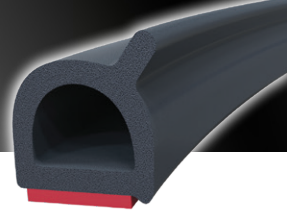
VHB DOUBLE SIDED TAPE

Page 38



ADDITIONAL PRODUCTS AND SERVICES

Page 39



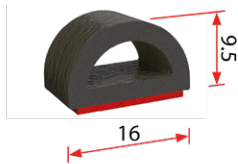
SELF-ADHESIVE SPONGE SEALS

OZ-50110-RL50



✱ EPDM Sponge ✱ 50m Roll

OZ-50109-RL33

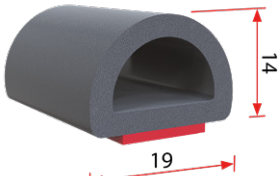


✱ EPDM Sponge ✱ 33m Roll

Self-adhesive sponge seals are good for: **SEALING:** They provide a tight and secure seal between vehicle components like doors, windows, boots, bonnets, and body panels. They can also seal canopies, caravans, and toolboxes for weather protection against water and dust. **PROTECTION:** They protect homes, cars, and boats against dust, moisture, and drafts. **INSULATION:** They improve insulation in homes by sealing gaps around doors and windows, which helps to reduce heating or cooling loss. **CUSHIONING:** They cushion and seal glass when applied to the edges of door and window frames. **NOISE AND VIBRATION REDUCTION:** They minimize vibration and noise due to their closed-cell foam structure. **MARINE APPLICATIONS:** They are ideal for marine applications due to their resistance to water absorption.

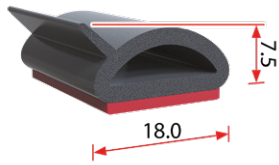
✱ NEW SIZE ✱

OZ-135AT-RL33



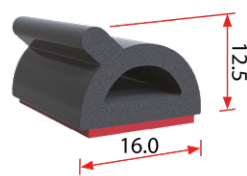
✱ EPDM Sponge ✱ 33m Roll

OZ-019-RL66



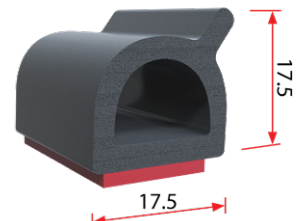
✱ EPDM Sponge ✱ 66m Roll

OZ-50449-RL33



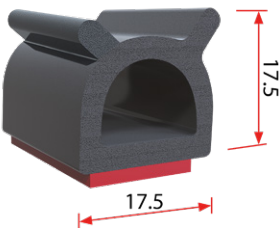
✱ EPDM Sponge ✱ 33m Roll

OZ-5036-RL45



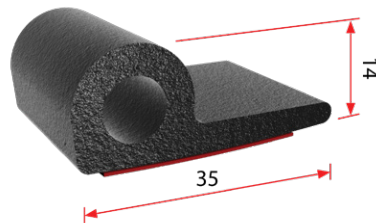
✱ EPDM Sponge ✱ 45m Roll

OZ-5036-2-RL33



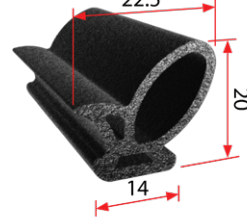
✱ EPDM Sponge ✱ 33m Roll

09GA1337



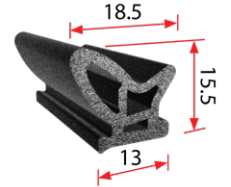
✱ EPDM Sponge ✱ 30m Roll

07306



✱ Not Self-Adhesive Taped
✱ EPDM Sponge ✱ 30m Roll

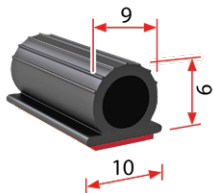
11012



✱ Not Self-Adhesive Taped
✱ EPDM Sponge ✱ 30m Roll

TPR

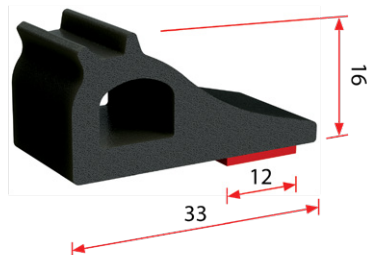
OZ-TP95-RL50



✱ TPR ✱ 50m Roll

UNIVERSAL TAILGATE SEAL

OZ-TGSEAL-RL33

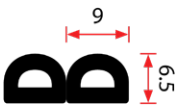


✱ EPDM Sponge ✱ 33m Roll

SELF-ADHESIVE WEATHER STRIP - 50M ROLLS



- ★ Set into the corners between the stop and window or door frame, this soft **EPDM Sponge** rubber seal provides a compression seal
- ★ Stops heat, cold, draughts, rain, bushfire embers, noise and insects
- ★ Reduces shutter noise
- ★ Improves air-conditioning efficiency



CODE	MATERIAL	COLOUR
OZ-5096TB-RL50	EPDM sponge	BLACK

CODE	MATERIAL	COLOUR
OZ-5096TG-RL50	EPDM sponge	GREY

SELF-ADHESIVE FOAM TAPES

Self-Adhesive Foam Tapes are good for:

CUSHIONING & SHOCK ABSORPTION: protecting delicate items and reducing vibration.

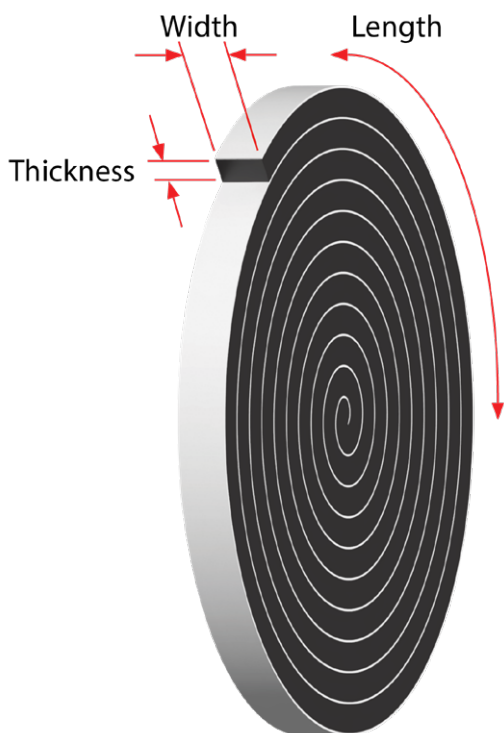
GAP FILLING: Sealing irregular surfaces.

THERMAL INSULATION: Some materials like PVC provide good thermal insulation.

CONFORMABILITY: These tapes adapt well to uneven surfaces.

Self-Adhesive Foam Tapes are:

EASY TO APPLY: Simply peel and stick.



When Ordering

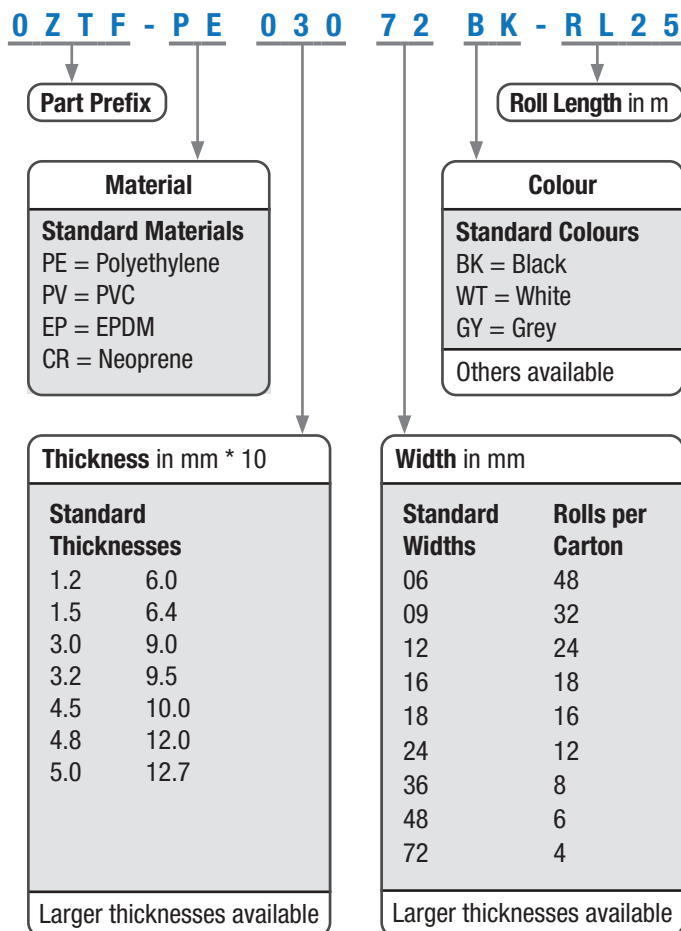
Some high turnover sizes are available on shelf, however due to the large number of possible thicknesses and widths this product is generally **slit to order**. Please allow 2 days. Please note there is a Minimum Order Quantity of 1 Carton. See the Width dialogue on this page for the number of Rolls in a carton for a certain width.

Roll Length is related to foam tape thickness and will be confirmed at the time of ordering.

Custom Specifications

Other sizes, materials and densities are available on request. Please contact us to discuss your requirements.

OZ Foam Tape Part Numbering Explained



Choosing the Best Foam Tape Material

Polyethylene (PE)

Lightweight, flexible, and offers good cushioning and shock absorption. Good for protective packaging, gasketing, and sealing where a soft, conformable material is needed.

Polyvinyl Chloride (PV)

Cost-effective, good resistance to moisture and chemicals, and has a closed-cell structure for thermal insulation. Good for mounting signs, displays, and general-purpose bonding.

Neoprene (CR)

High-quality material with excellent sealing properties, medium density, and contains compressed air bubbles for airtight seals. Good for long-lasting seals, ideal for toolboxes and canopies.

Ethylene Propylene Diene Monomer (EPDM)

Excellent resistance to weathering, ozone, and UV radiation, with good cushioning and sealing properties. Good for outdoor applications, automotive weather-stripping, and gaskets.

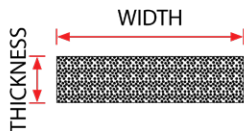
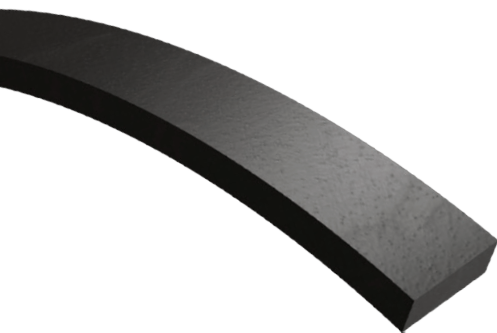
RECTANGULAR EPDM SPONGE EXTRUSION - 4M ROLLS

Rectangular **EPDM** rubber sponge extrusions are:

- DURABLE:** They offer long-lasting performance in harsh environments,
- FLEXIBLE:** Easily shaped and customised for specific applications
- RESISTANT:** Air and watertight, resistant to UV, ozone, and extreme temperatures, making them ideal for outdoor use.
- RANGE OF SIZES:** Available in various thicknesses to suit different requirements.

They are useful for a variety of applications including:

- SEALING & INSULATION:** Widely used for creating air and watertight seals in both interior and exterior applications. It is effective in preventing the buildup of bacteria and mold, making it suitable for environments where cleanliness is crucial.
- CONSTRUCTION INDUSTRY:** In construction, EPDM sponge rubber is used for sealing windows, doors, and other openings to prevent water and air leaks
- MANUFACTURING INDUSTRY:** Used for sealing machinery and equipment, providing protection against dust and moisture.
- PRODUCT PACKAGING AND PROTECTION:** Used to cushion and protect products during shipping and storage, providing a soft yet durable barrier against impacts.
- AUTOMOTIVE & MECHANICAL:** It is used in automotive seals, weather-stripping, and other mechanical components due to its resistance to extreme temperatures and environmental factors.
- ROOFING:** Used in roofing materials due to its durability and resistance to UV and ozone exposure.



CODE	THICKNESS	WIDTH
09GA1135	3.0mm	6.0mm
09GA1136	3.0mm	10mm
09GA1137	3.0mm	12mm
09GA1138	3.0mm	15mm
09GA1139	3.0mm	20mm
09GA1140	3.0mm	25mm
09GA1141	3.0mm	30mm
09GA1168	6.0mm	6mm
09GA1142	6.0mm	10mm
09GA1143	6.0mm	12mm
09GA1144	6.0mm	15mm
09GA1145	6.0mm	20mm
09GA1146	6.0mm	25mm
09GA1147	6.0mm	30mm
09GA1148	6.0mm	40mm
09GA1149	6.0mm	50mm
09GA1169	10mm	10mm
09GA1150	10mm	12mm
09GA1151	10mm	15mm
09GA1152	10mm	20mm
09GA1153	10mm	25mm
09GA1154	10mm	30mm
09GA1170	12mm	12mm
09GA1155	12mm	15mm
09GA1156	12mm	20mm
09GA1157	12mm	25mm
09GA1158	12mm	30mm
09GA1159	12mm	40mm
09GA1160	12mm	50mm
09GA1171	15mm	15mm
09GA1161	15mm	20mm
09GA1162	15mm	25mm
09GA1163	15mm	30mm
09GA1172	20mm	20mm
09GA1164	20mm	25mm
09GA1165	20mm	30mm
09GA1173	25mm	25mm
09GA1166	25mm	30mm
09GA1167	25mm	50mm

Other sizes available on request.



ROUND EPDM RUBBER SPONGE CORD - 50M ROLLS

EPDM rubber sponge cord is good for:

SEALING: Used as weatherproofing for doors, windows, and floorboards to prevent drafts. Used as a waterproofing membrane. Ventilation ducting seals. Seals against air, dust, and water migration.

GASKETS: For plumbing, HVAC systems, and industrial machinery

CUSHIONING: As bumpers on equipment and machinery

OTHER: Other applications such as electrical insulation used on conveyor belts, and as protection for solar panel installations.

CORD DIAMETER



CODE	DIAMETER
09GA1174	6mm
09GA1725	8mm
09GA1175	10mm
09GA1176	12mm
09GA1177	15mm
09GA1178	20mm
09GA1179	25mm
09GA1180	30mm

Other sizes available on request.

ROUND NBR RUBBER SOLID CORD

Solid **NBR** rubber cord is good for: **SEALING:** Sealing applications like outer lid gaskets, and O-rings, cushioning, or vibration damping.

NBR rubber cord is known for its **MATERIAL PROPERTIES**. These include tolerance to petroleum products, minerals, and vegetable oils, as well as hydrocarbon applications, and certain dilute acids and alkalis.

CORD DIAMETER



CODE	DIAMETER	ROLL LENGTH
OZ-NC03-RL100	3mm	100m
OZ-NC04-RL100	4mm	100m
OZ-NC05-RL100	5mm	100m
OZ-NC06-RL100	6mm	100m
OZ-NC07-RL100	7mm	100m
OZ-NC08-RL100	8mm	100m
OZ-NC09-RL100	9mm	100m
OZ-NC10-RL50	10mm	50m
OZ-NC12-RL50	12mm	50m
OZ-NC14-RL50	14mm	50m
OZ-NC16-RL25	16mm	25m
OZ-NC19-RL25	19mm	25m
OZ-NC22-RL25	22mm	25m
OZ-NC25-RL25	25mm	25m

Other sizes and materials available on request.

PINCHWELD PVC TRIMS - 50M ROLLS

090Z059-RL50
09GA765

Grip Range: 0.5 - 1mm

090Z063-RL50

Grip Range: 1 - 2mm

07ES18-RL50

Grip Range: 0.5-1.2mm

090Z035-RL50
09GA534

Grip Range: 0.5 - 2mm

Pinchweld **PVC** Trims are good for:
PROTECTION: They clip over and provide protection from hard and sometimes sharp metal sheet edges.
SEALING: They provide a basic seal for doors, windows, bonnets and boots against weather and dust.

09GA1197

Grip Range: 1.5 - 4.5mm

090Z056-RL50 **09GA533**

Grip Range: 1.0 - 3.5mm

090Z719-RL50

Grip Range: 0.5 - 1.2mm

090Z173-RL50

Grip Range: 0.5 - 1.2mm

186N12-RL50 **186R12-RL50** **186G12-RL50** **186B12-RL50**

BLACK
RED
GREY
BROWN

Grip Range: 0.8 - 3.5mm

090Z083B-RL50

Grip Range: 4.0 - 5.5mm

090Z083G-RL50

Grip Range: 4.0 - 5.5mm

090Z310-RL50 **090Z311-RL50** **090Z312-RL50** **090Z313-RL50** **090Z314-RL50**

BLACK
SADDLE
GAZELLE
BUCKSKIN
CHAMOIS

Grip Range: 2.0 - 5.0mm
 * Suits early model Holdens

09GA531B

Grip Range: 2.0 - 5.0mm

090Z295W-RL50

Grip Range: 2.0 - 5.0mm

MARINE PINCHWELD PVC TRIM

09GA1731
09GA1734

Grip Range: 3.5 - 6.3mm
 * Marine Grade with Aluminium Clip
 * Also available by the metre

09GA1732
09GA1733

Grip Range: 1.5 - 4.3mm
 * Marine Grade with Aluminium Clip
 * Also available by the metre

09GA1196
09GA1195

Grip Range: 0.5 - 2.0mm
 * Marine Grade with Aluminium Clip

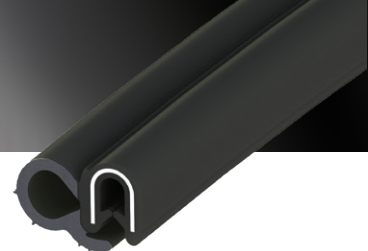
090Z222-RL50

Grip Range: 1.0 - 4.0mm



PINCHWELD EPDM TRIM

PINCHWELD CO EXTRUSIONS - 50M ROLLS



090Z2360-RL50

Grip Range: 1.0 - 2.0mm

090Z011

Grip Range: 1.0 - 2.5mm

090Z052-RL50 NEW

Grip Range: 1.0 - 2.0mm

090Z053-RL50
09GA845

Grip Range: 0.5 - 4.0mm
Wire Cage

090Z512-RL50 NEW

Grip Range: 0.5 - 4.0mm
Wire Cage

090Z058-RL50

Grip Range: 1.0 - 2.0mm
PVC-EPDM Sponge

090Z511-RL50 NEW

Grip Range: 1.0 - 2.0mm
PVC-EPDM Sponge

090Z040-RL50

Grip Range: 0.8 - 2.5mm

090Z555-RL50

Grip Range: 0.8 - 2.5mm
PVC-EPDM Sponge

090Z054-RL50 **09GA803**

Grip Range: 0.8 - 3.0mm
PVC-EPDM Sponge

090Z004-RL50

Grip Range: 1.0 - 4.0mm

09LR08-RL50

Grip Range: 0.8 - 3.0mm

090Z045-RL25 NEW

Grip Range: 3.5 - 7.5mm
★ 25m Roll ★ Excavator glass seal

090Z017-RL50

Grip Range: 0.8 - 4.0mm

09BR07-RL50

Grip Range: 1.5 - 5.6mm

09GA1187

Grip Range: 1.0 - 4.0mm

09GA1192

Grip Range: 1.0 - 4.0mm

090Z707-RL50

Grip Range: 1.0 - 4.0mm

12SU07-RL50

Grip Range: 0.8 - 2.5mm

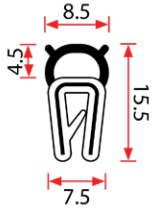
090Z060-RL50 **09GA784**

Grip Range: 2.0 - 5.0mm

PINCHWELD CO EXTRUSIONS - 50M ROLLS

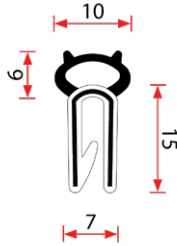


09EX10-RL50



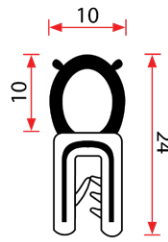
Grip Range: 0.5 - 2.0mm

09OZ057-RL50



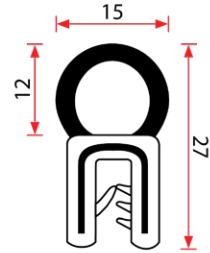
Grip Range: 1.0 - 2.0mm

09OZ051-RL50 09GA1268



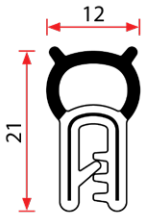
Grip Range: 0.5 - 4.0mm
Wire Cage

09OZ111-RL50



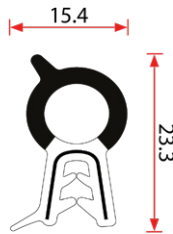
Grip Range: 1.0 - 4.5mm
Wire Cage

09GA1598



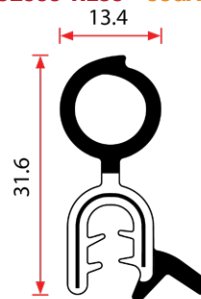
Grip Range: 0.5 - 3.5mm

09GA972



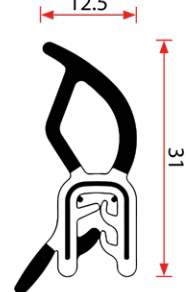
Grip Range: 0.5 - 3.0mm

09OZ006-RL50 09GA1188



Grip Range: 1.0 - 4.0mm

09OZ166-RL50



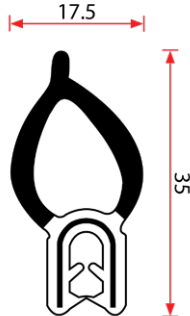
Grip Range: 0.8 - 2.0mm

09OZ002-RL50



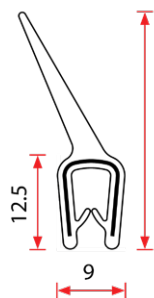
Grip Range: 0.8 - 4.0mm

09OZ001-RL50



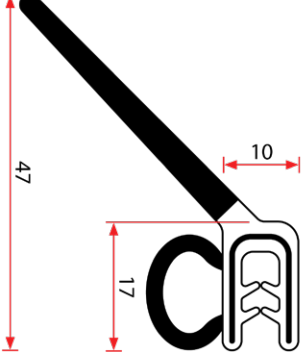
Grip Range: 1.0 - 2.5mm

09OZ300-RL25



Grip Range: 0.5 - 2.0mm
25m Roll

09OZ500-RL25



Grip Range: 1.0 - 4.0mm
Wire Cage 25m Roll

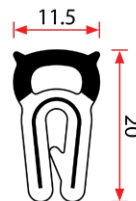
Pinchweld Co Extrusions are good for:

SEALING: They create tight seals for doors and windows, preventing water and air leaks.

EDGE PROTECTION: These clip over the exposed edges of metal, glass, and plastic, providing a clean finish and preventing damage.

NOISE REDUCTION & INSULATION: They help in reducing noise levels by dampening vibrations between metal panels and can offer some thermal insulation. These co-extrusions are primarily made of **EPDM** rubber which offers excellent aging, high temperature, and chemical, ozone, UV, and weathering resistant, making them suitable for both indoor and outdoor applications.

09GA1189

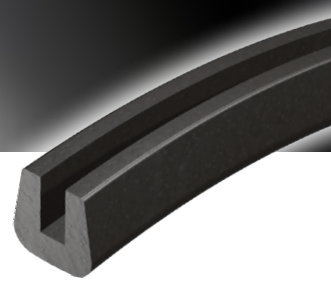


Grip Range: 0.5 - 2.5mm
50m Roll

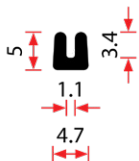
Special Order Extrusions

ALP OZ have a number of custom extrusions available on Special Order that may suit your application. We are also able to design, test and create unique products to suit your project. Contact us today to discuss how we can customise a product to suit your needs.

SOLID EPDM RUBBER PROFILES

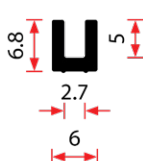


09GA1122



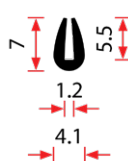
✳ Channel Strip # 51

09GA1120



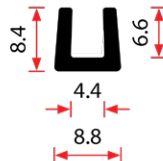
✳ Channel Strip # 43

09GA1703



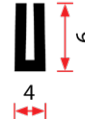
✳ Small U channel

09GA1705



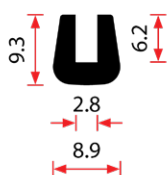
✳ Square U channel

OZ-U723-RL50



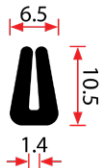
✳ 50m Roll

09GA1118



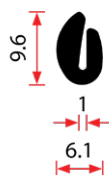
✳ Channel Strip # 32

OZ-U559-RL30



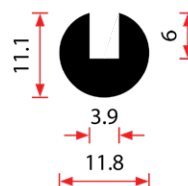
✳ 30m Roll

09GA1134



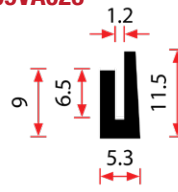
✳ Channel Strip # 44

09GA1119



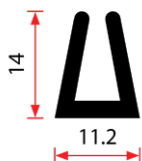
✳ Channel Strip # 7

09VA023



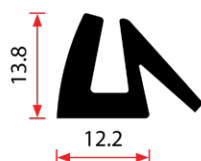
✳ Channel Strip # 7B
✳ 60m Roll

09GA1117



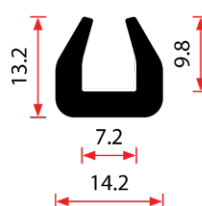
✳ Channel Strip # 3

09GA1597



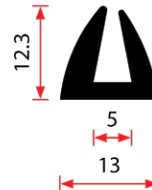
✳ Channel Strip # 4

09GA1708



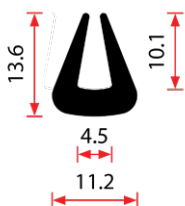
✳ Large U Channel #7

09GA1113



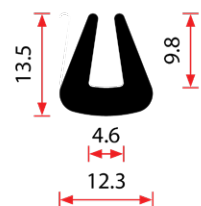
✳ Channel Strip # 8

09GA1110



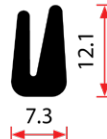
✳ Channel Strip # 15

09GA1109



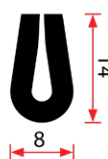
✳ Channel Strip # 16

09GA1112

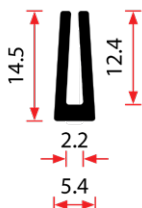


✳ Channel Strip # 52

OZ-R32-RL50

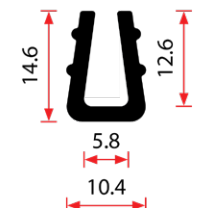


09GA1111



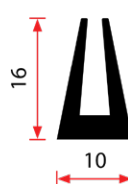
✳ Channel Strip # 50

09GA1707



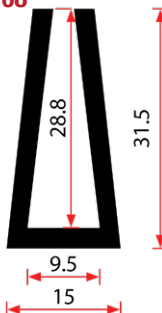
✳ U Channel

09GA1121



✳ Channel Strip # 2

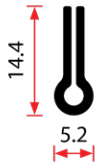
09GA1108



✳ Channel Strip KC29

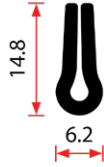
SOLID EPDM RUBBER PROFILES

09GA1706



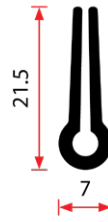
✱ C-Keyring

09GA1132



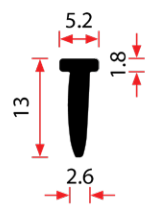
✱ Channel Strip # 17

09GA1131



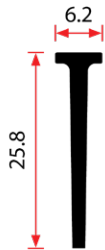
✱ Channel Strip # 13

09GA1115



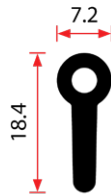
✱ Channel Strip # 28

09GA1592



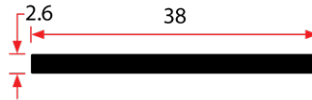
✱ Channel Strip # 1

09GA1595



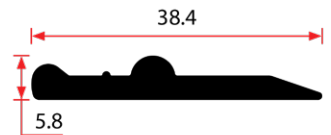
✱ Channel Strip # 11

09GA1133



✱ Channel Strip # 19

09GA1589



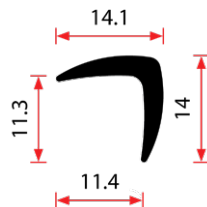
✱ Channel Strip # 30

09GA1596



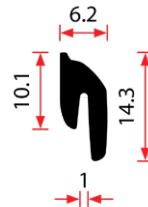
✱ Channel Strip # 24

09GA1116



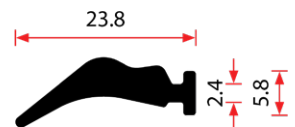
✱ Channel Strip # 35

09GA1114



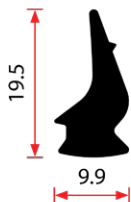
✱ Channel Strip # 49

09GA1594



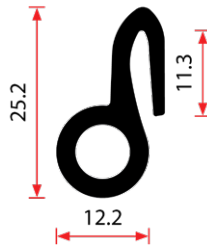
✱ Channel Strip # 55

09GA1593



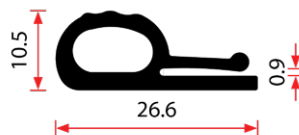
✱ Channel Strip # 12

09GA1591



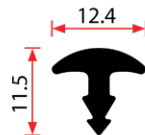
✱ Channel Strip # 27

09GA1590



✱ Channel Strip # 10

09GA1704



✱ T-Seal

INSERTION STRIP - 10M ROLLS

Our **SBR** rubber insertion strips are reinforced with a cotton liner, having excellent durability and resistance to tearing. Insertion strips are good for:

SEALING AND PROTECTION: They are suitable for sealing around metal sheeting, joinery, and woodwork.

WEAR-RESISTANT STRIPS: Ideal for creating wear-resistant strips due to their robust composition.

GASKETING: A good gasket material because it can handle high compression loads.

LINING: Insertion rubber sheets can be used for lining toolboxes, work bench tops, campers, trailers, and 4WD canopies.

CUSHIONING AND SUPPORT

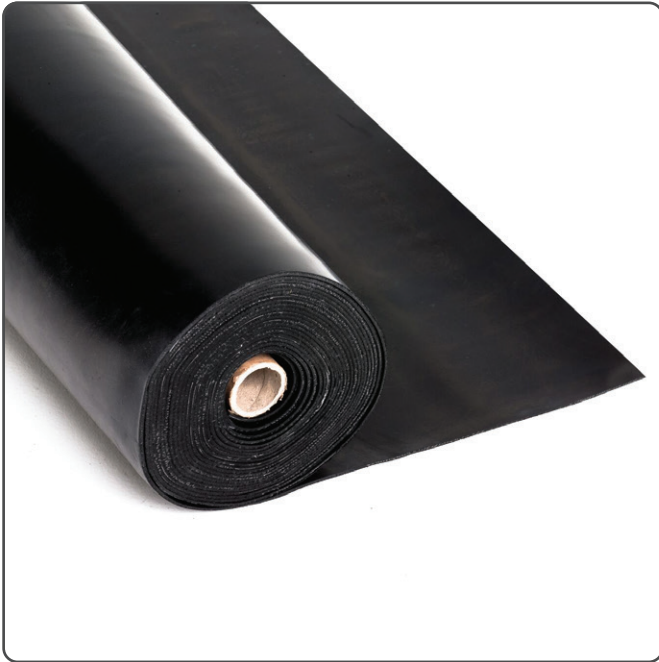
BARRIERS & EDGING



CODE	THICKNESS	WIDTH	REINFORCED
INST1.5-050-RL10	1.5mm	50mm	1 LAYER COTTON
INST1.5-075-RL10	1.5mm	75mm	1 LAYER COTTON
INST1.5-100-RL10	1.5mm	100mm	1 LAYER COTTON
INST1.5-150-RL10	1.5mm	150mm	1 LAYER COTTON
INST1.5-200-RL10	1.5mm	200mm	1 LAYER COTTON
INST1.5-300-RL10	1.5mm	300mm	1 LAYER COTTON
INST3-050-RL10	3.0mm	50mm	1 LAYER COTTON
INST3-075-RL10	3.0mm	75mm	1 LAYER COTTON
INST3-100-RL10	3.0mm	100mm	1 LAYER COTTON
INST3-150-RL10	3.0mm	150mm	1 LAYER COTTON
INST3-200-RL10	3.0mm	200mm	1 LAYER COTTON
INST3-300-RL10	3.0mm	300mm	1 LAYER COTTON
INST4.5-050-RL10	4.5mm	50mm	2 LAYER COTTON
INST4.5-075-RL10	4.5mm	75mm	2 LAYER COTTON
INST4.5-100-RL10	4.5mm	100mm	2 LAYER COTTON
INST4.5-150-RL10	4.5mm	150mm	2 LAYER COTTON
INST4.5-200-RL10	4.5mm	200mm	2 LAYER COTTON
INST4.5-300-RL10	4.5mm	300mm	2 LAYER COTTON
INST6-050-RL10	6.0mm	50mm	2 LAYER COTTON
INST6-075-RL10	6.0mm	75mm	2 LAYER COTTON
INST6-100-RL10	6.0mm	100mm	2 LAYER COTTON
INST6-150-RL10	6.0mm	150mm	2 LAYER COTTON
INST6-200-RL10	6.0mm	200mm	2 LAYER COTTON
INST6-300-RL10	6.0mm	300mm	2 LAYER COTTON
INST9.5-050-RL10	9.5mm	50mm	2 LAYER COTTON
INST9.5-100-RL10	9.5mm	100mm	2 LAYER COTTON
INST9.5-150-RL10	9.5mm	150mm	2 LAYER COTTON
INST9.5-200-RL10	9.5mm	200mm	2 LAYER COTTON
INST9.5-300-RL10	9.5mm	300mm	2 LAYER COTTON

Other sizes available on request.

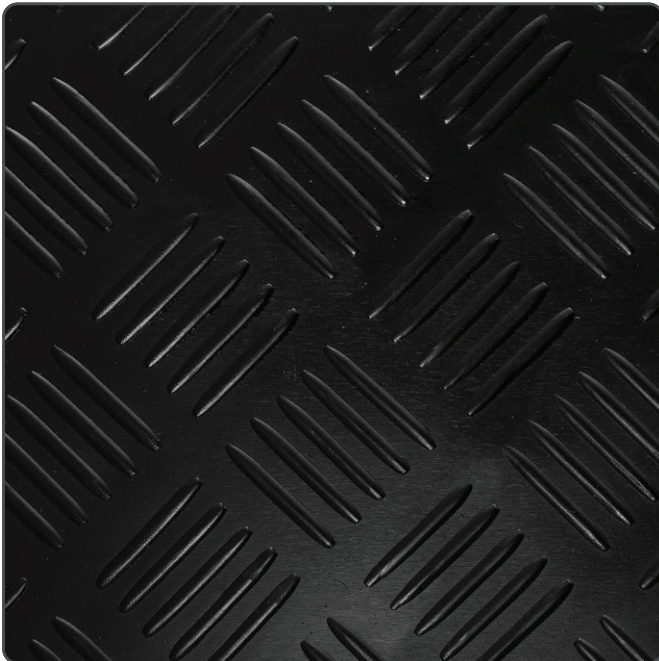
REINFORCED SHEET RUBBER - 10M ROLLS



CODE	THICKNESS	WIDTH	REINFORCED
OZ1.5-120RS-RL10	1.5mm	1200mm	COTTON
OZ3-120RS-RL10	3mm	1200mm	COTTON
OZ4.5-120RS-RL10	4.5mm	1200mm	COTTON
OZ6-120RS-RL10	6mm	1200mm	COTTON
OZ9.5-120RS-RL10	9.5mm	1200mm	COTTON

Made from **NR/SBR**.

CHECKER PLATE MATTING - 10M ROLLS



CODE	THICKNESS	WIDTH	REINFORCED
OZ3.5-120CP-RL10	3.5mm	1200mm	NO
OZ4.5-150CP-RL10	4.5mm	1500mm	NO
OZ5-150CP-RL10	5.0mm	1500mm	1 PLY NYLON

Made from **SBR**.

RIBBED SHEET MATTING

Ribbed sheet rubber matting is designed for general-purpose use in applications requiring a non-slip surface.

This sheet matting is made from **SBR** (Styrene Butadiene Rubber) which provides moderate mechanical strength and abrasion resistance.

Ribbed sheet matting is good for:

SURFACE PROFILE: The ribbed profile on the top surface enhances grip in both dry and damp conditions.

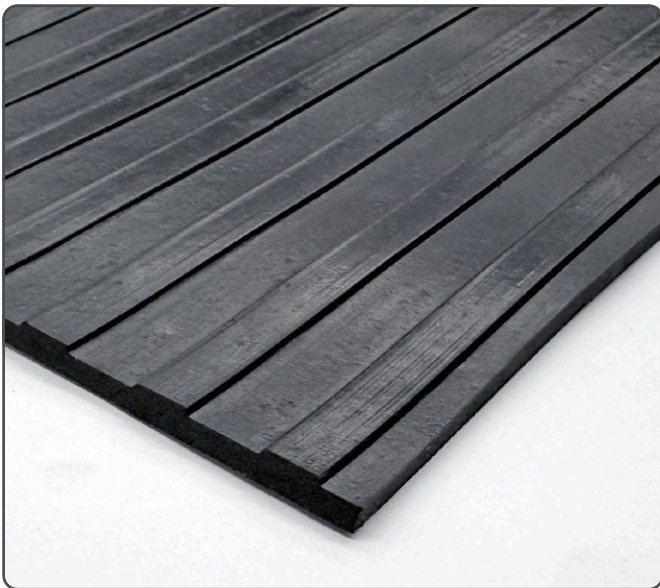
ADHESION: The underside often has a rough finish to improve adhesion to surfaces.

NOISE REDUCTION: Can be used to reduce noise.

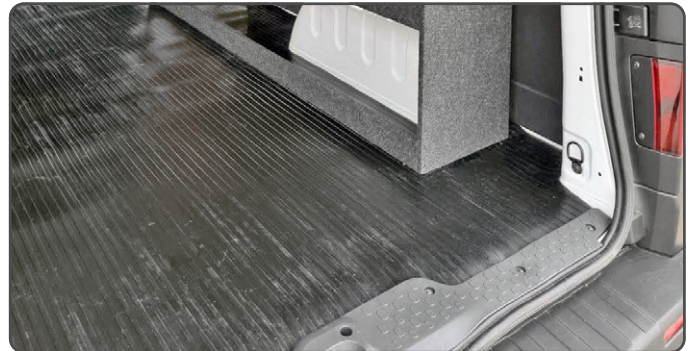
SURFACE PROTECTION: Protects underlying surfaces from wear and tear.

WIDE RIB SHEET MATTING - 10M ROLLS

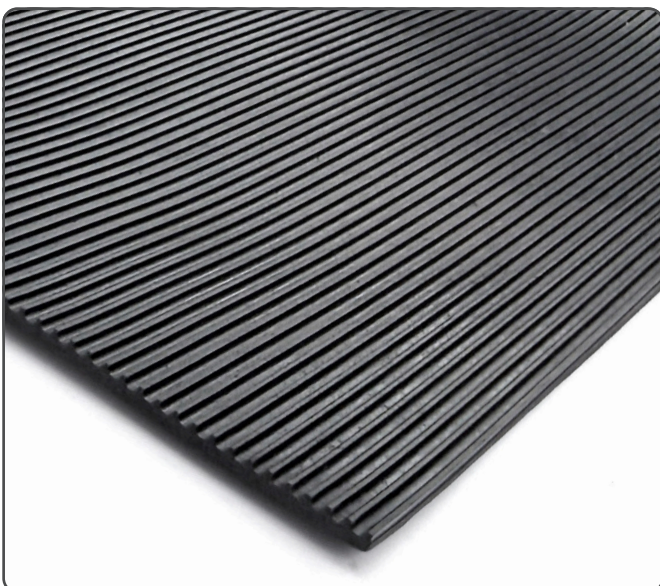
Made from **SBR**.



CODE	THICKNESS	WIDTH	REINFORCED
OZ3.5-183WR-RL10	3.5mm	1830mm	NO
OZ4.5-200WR-RL10	4.5mm	2000mm	NO
OZ5-183WR-RL10	5mm	1830mm	COTTON



FINE RIB SHEET MATTING - 10M ROLLS

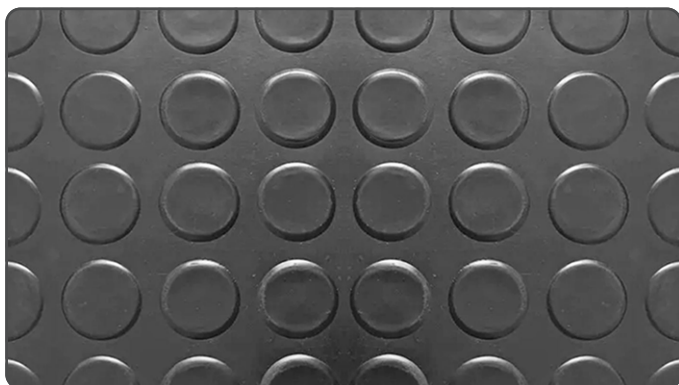


NEW

CODE	THICKNESS	WIDTH	REINFORCED
OZ3-150FR-RL10	3.0mm	1500mm	NO
OZ5-120FR-RL10	5.0mm	1200mm	NO

Made from **SBR**.

STUDDED / COIN RUBBER MATTING - 10M ROLLS



NEW

CODE	THICKNESS	WIDTH	REINFORCED
OZ3-150CR-RL10	3.0mm	1500mm	NO

Coin rubber matting made from **SBR** is good for its anti-slip properties and durability. It is used for:

INDOOR APPLICATIONS: It is widely used in airports, hotels, shopping malls, and other high-traffic areas for its non-slip surface, which helps prevent accidents.

GARAGES & VEHICLES: Coin rubber matting is ideal for garages, inside vans, and other high-use areas due to its ability to withstand heavy traffic and rough conditions.

TRAILERS & CARAVANS: It is often used in trailer and caravan fitouts, as well as for lining drawers in vehicle storage systems.

INDUSTRIAL & COMMERCIAL SETTINGS: It is suitable for industrial foyers, entryways, and work areas where there is significant foot traffic, including areas with steel toe boots.

OUTDOOR & SPECIALISED USES: It is used on ramps, trailers, golf club bridge aprons, marine areas, building access points, and wheeled vehicles for its anti-slip properties.

SURFACE PROTECTION: Coin rubber matting can protect working surfaces, line drawers, or cover shelves to prevent damage and provide grip.

HORSE FLOAT / HAMMER MATTING - 10M ROLLS



NEW

CODE	THICKNESS	WIDTH	REINFORCED
OZ-HFR06-RL10	6mm	2000mm	NYLON
OZ-HFR08-RL10	8mm	2000mm	NYLON

Hammer Matting is excellent for animal stable and float flooring due to its durability and the extra grip it provides the the animal. The rubber material offers a comfortable and soft flooring option, reducing joint stiffness and improving blood circulation for horses. it is made from **SBR**.

Hammer mats also offer the benefits of:

ENHANCED SAFETY: The non-slip surface of hammer mats minimises the risk of slips and falls, making them suitable for both wet and dry conditions.

PROTECTION & SUPPORT: They provide a cushioned surface that can help prevent injuries like hock sores, which can occur on hard surfaces. They can also be installed on walls for enhanced protection.

THERMAL INSULATION: Rubber hammer mats are a good insulator against cold floors.

COST REDUCDTION: Using rubber mats can significantly reduce the need for thick bedding, lowering bedding costs and reducing the labor needed for maintenance.

DURABILITY & HYGIENE: Hammer mats are hard-wearing and resistant to moisture, ensuring a hygienic surface that is easy to clean and maintain over time.

VERSATILITY: They can be installed over almost any surface.



RUBBER MATS

Rubber mats are good for:

DURABILITY & LONGEVITY: Highly durable, able to withstand heavy usage, making them a cost-effective solution in the long run. Resistant to wear and tear they can last for years without needing replacement.

COMFORT & ANTI-FATIGUE: They provide good cushioning, which helps reduce fatigue and stress on joints and muscles, especially in environments where people stand for long periods. This can enhance productivity and well-being.

SAFETY & SLIP RESISTANCE: Slip-resistant, providing traction even on wet surfaces, which helps prevent accidents and injuries.

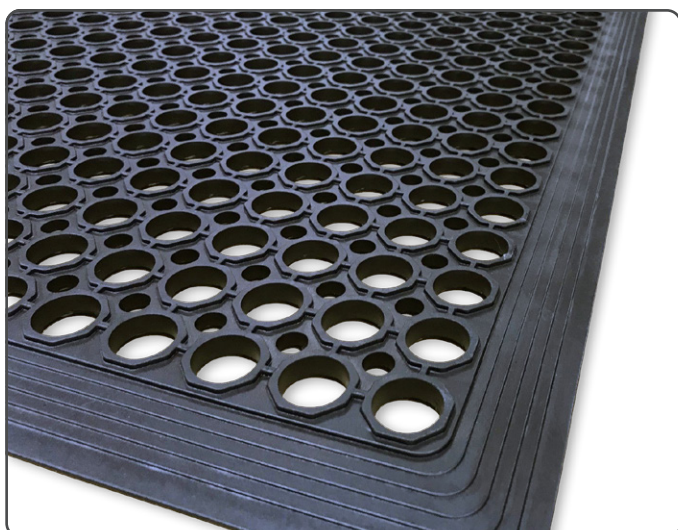
EASY MAINTENANCE: Easy to clean and maintain. They are resistant to chemicals and can be washed in wet conditions, making them suitable for environments like commercial kitchens and industrial settings.

ENVIRONMENTAL BENEFITS: Rubber mats are recyclable.

NOISE & SHOCK ABSORPTION: Rubber mats absorb noise and shocks, protecting floors from damage and reducing the risk of injury from falls or dropped objects.

VERSATILITY & ADAPTABILITY: Rubber mats are used in a variety of settings, including gyms, animal facilities, kitchens, and industrial environments, due to their versatility and adaptability.

ANTI FATIGUE NON-SLIP MAT



CODE	SIZE	THICKNESS
OZ-AFM12	910mm * 1530mm	12mm

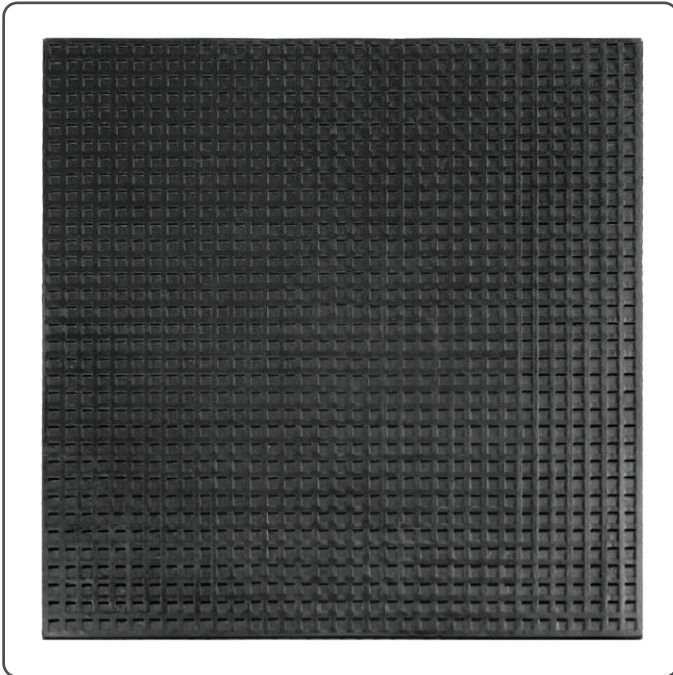
Made from **SBR**.



CODE	SIZE	THICKNESS
OZ-AFM14	600mm * 900mm	13mm

Made from **SBR**.

ANTI VIBRATION PAD - BOX OF 10



CODE	SIZE	THICKNESS
OZ-AV450-BX10	450mm*450mm	8mm

Made from **EPDM** rubber.

GYM MAT



CODE	SIZE	THICKNESS
GYMMAT	1000mm*1000mm	15mm

Made from **SBR** rubber.

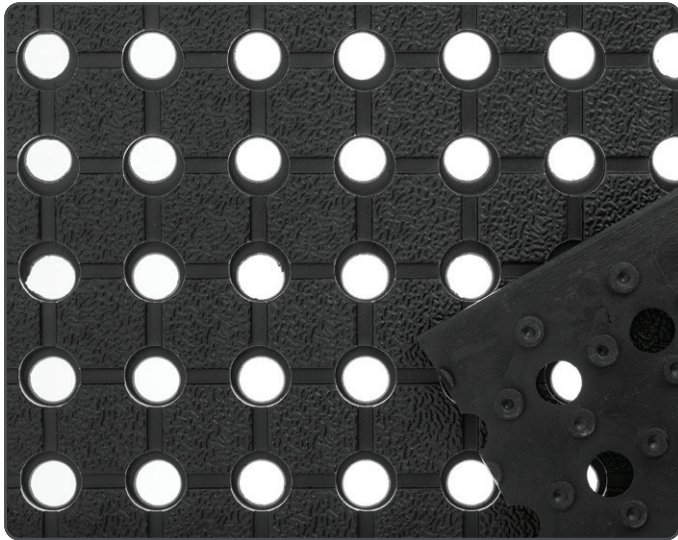


UTE MATTING - 10M ROLLS

Made from **BLENDED RUBBER** this ute matting is:
COST EFFECTIVE: A cost effective way to line the
 tray of utes and trucks.

VERSATILE It can be easily cut to size.

CODE	THICKNESS	WIDTH
OZ-183UM-RL10	10mm	1830mm


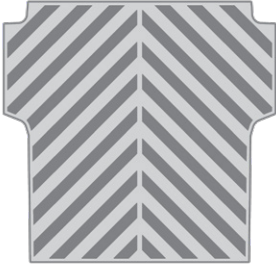


MOULDED UTE TRAY MATS

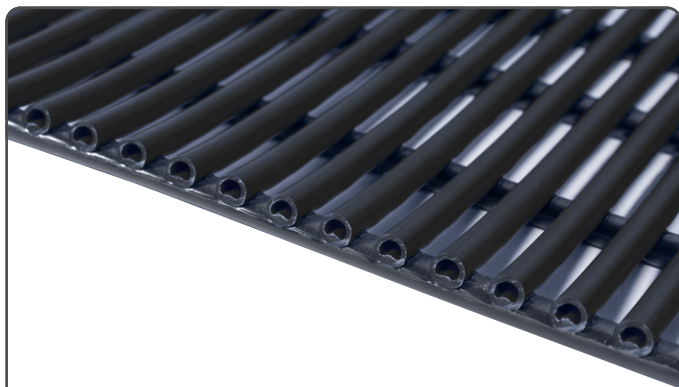
ALP OZ ute tray mats are:

- CUSTOM MOULDED:** to suit the vehicle tub liner.
 - READY TO USE:** There is no drilling or fastening required.
 - DURABLE:** Made from **BLENDED RUBBER** including VCORD offering long-lasting performance in harsh environments.
 - RESITSTANT:** These mats are designed for purpose and are resistant to
 - ★ High Temperatures
 - ★ Most Chemicals
 - ★ Cracking
 - ★ Wearing
 - ★ Tearing
 - ★ UV
- Our ute tray mats also have the **ENVIRONMENTAL BENEFIT** of being made from 50 to 80% recycled rubber.



CODE	DETAILS	DESIGN
OZ-FRM	FORD Ranger 2012-2021 6mm thick. Fibre reinforced.	
OZ-FRM22	FORD Ranger 2022-on with Tub Liner. (Excludes Raptor) 8.8 / 5.5mm thick.	

PVC TUBE MATTING - 12M ROLLS



CODE	COLOUR	WIDTH
TM0900BLK-RL12	Black/Black	900mm
TM1200BLK-RL12	Black/Black	1200mm

PVC Tube matting is good for:

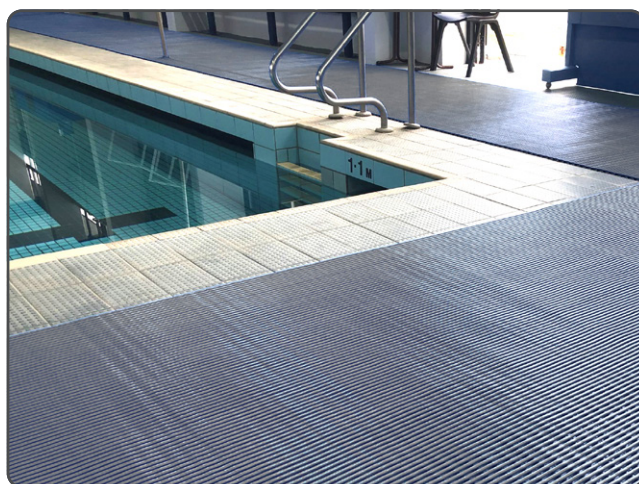
WET AREAS: Ideal for use in areas exposed to moisture, such as swimming pool areas, boats, and food preparation zones. It can be used in commercial kitchens, bars, marine vessels, aquatic centers, change rooms, locker rooms, packing areas, workshops, garages, and other industrial environments.

SAFETY & COMFORT: The matting enhances safety in workplaces and gyms. It also provides insulation against wet or damp surfaces, cold, noise, and electricity.

OTHER USES: It can also be used for camping and light-duty industrial applications.

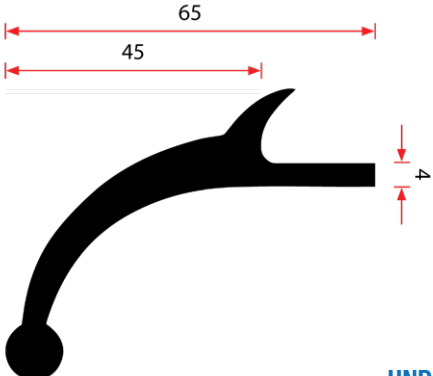


CODE	COLOUR	WIDTH
TM0900BLU-RL12	Blue/Black	900mm
TM1200BLU-RL12	Blue/Black	1200mm



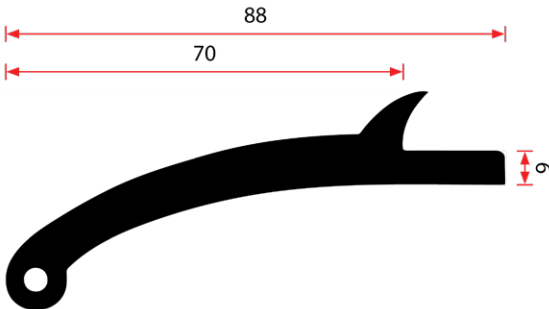
CODE	COLOUR	WIDTH
TM0900GRY-RL12	Grey/Black	900mm
TM1200GRY-RL12	Grey/Black	1200mm

WHEEL ARCH FLARES



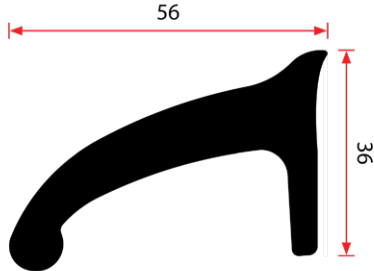
UNDER GUARD

CODE	MATERIAL	WIDTH	LENGTH
OZ-WAF45-RL3	EPDM	45mm	3.0m
OZ-WAF45-RL6	EPDM	45mm	6.0m



UNDER GUARD

CODE	MATERIAL	WIDTH	LENGTH
OZ-WAF70-RL3	EPDM	70mm	3.0m
OZ-WAF70-RL6	EPDM	70mm	6.0m



SIDE MOUNTED

CODE	MATERIAL	WIDTH	LENGTH
OZ-WAF444S-RL20	EPDM	45mm	20m

These Wheel Arch Flares are a universal fit for all 4x4 and transport vehicles, including Toyota Hilux Land Cruiser Nissan Patrol. They are made from **EPDM** rubber material which provides excellent durability and longevity.

Our Wheel arch flares are:

PRE-CURVED: They are pre-curved to ensure easy fitment to the vehicle wheel arch.

EASY TO INSTALL: Flares can be affixed with rivets, bolts or self-drilling screws.

They are good for:

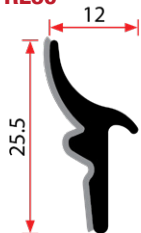
ROADWORTHINESS: They keep 4x4 vehicles roadworthy by keeping the wheels covered.

SAFETY: They reduce mud spatter and stones being projected skyward when using larger and wider tires.



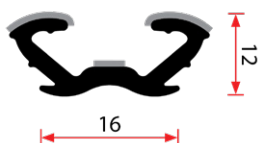
FLOCKED BAILEY CHANNEL - 30M ROLLS

FL017-RL30



Door Belt Extrusion Comm Outer

FL622-RL30



✱ Suits Commodore VB-VL pillar

Flocked Bailey channel is a type of rubber seal primarily installed around the edges of vehicle windows to create a tight seal between window glass and the window frame. It is designed to prevent water, dust, and debris from entering the vehicle cabin while also reducing noise and ensuring smooth window operation. Made from **EPDM** rubber with a flocked finish. The flocked finish provides a smooth surface for the glass to slide against. **APPLICATIONS** Commonly used in industrial vehicles such as utes, vans, trucks, and heavy machinery. May require custom fabrication of retainers for certain applications.

FL502-RL30



✱ Suits Ford XD-XF Pillar and other

FL501-RL30



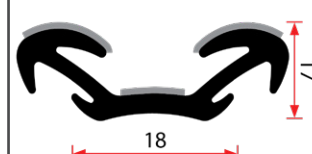
✱ Various Falcon
✱ Some F100 pillar

FL1150-RL30



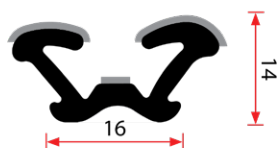
✱ Suits Holden HQ-WB

FL500-RL30



✱ Suits Commodore VB-VL main bailey

FL068-RL30



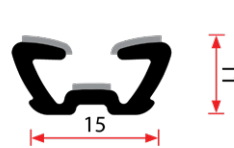
✱ Universal ✱ Suits Holden FX-HG

FL069-RL30



✱ Jag XJ6 ✱ Nissan G60
✱ Toyota FJ

FL026-RL30



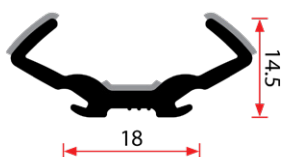
✱ Universal

FL426-RL30



✱ Suits Cortina and Escort

FL628-RL30



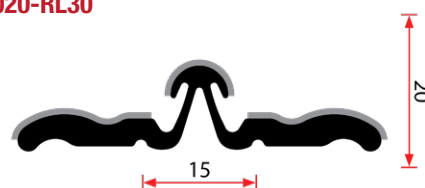
✱ XW-XY, XA-XB Rear, Datsun 1600

FL067-RL30



12mm x 12mm U-Section folded
✱ Universal

FL020-RL30



✱ Fits Coaster / Hi Ace / Troopy Bus Dual Sliding Windows

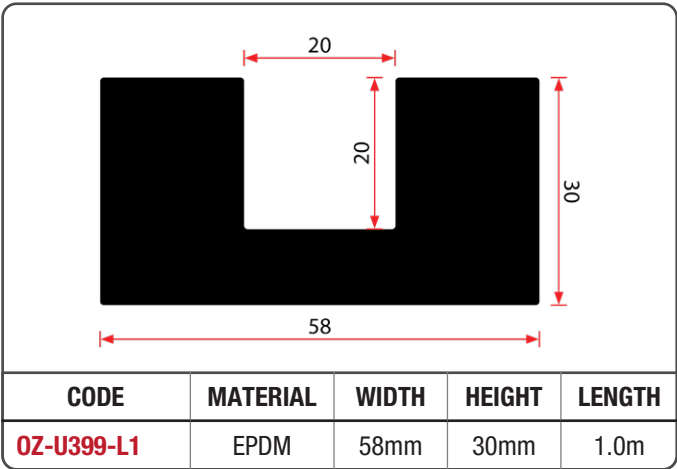
Dimensions shown above are for the size of the flocking after it has been installed.

GLAZING TRUCK PROTECTIVE RUBBERS

Glazing Truck Rubbers are specialized rubber products used in the transportation and storage of glass, particularly in truck applications. These rubbers serve as cushions or protective strips to prevent damage to the glass during transit or storage.

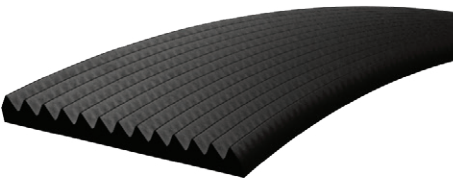
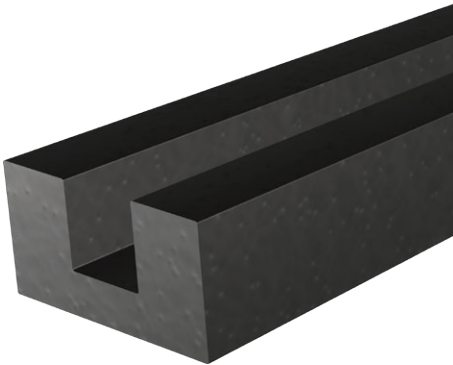
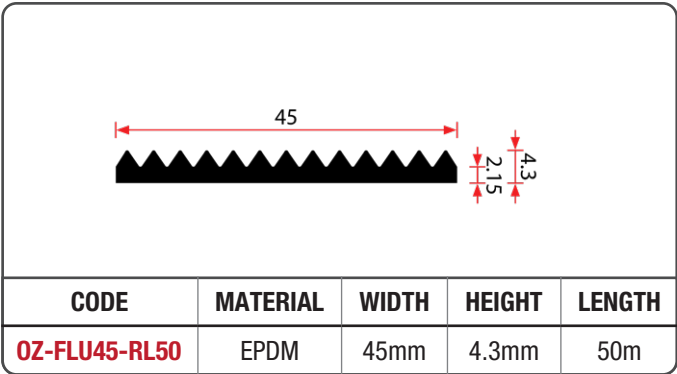
SETTLING U-BLOCK

These heavy-duty EPDM rubber strips are used as base protectors on glass truck racks, shop storage racks, and barrows.



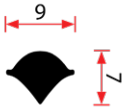
RIBBED STRIP

Ribbed strip is used in glass transporter bodies, storage racks, and block glass barrows. It forms a cushion between the glass and metal, providing protection against scratches and breakage. Made from EPDM rubber which offers excellent aging, high temperature, chemical, ozone, UV, and weathering resistance, making them suitable for both indoor and outdoor applications..

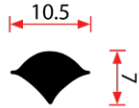


GLAZING RUBBERS - 30M ROLLS

OZ-GL1-RL30



OZ-GL2-RL30



OZ-ACCOLOCK-RL30



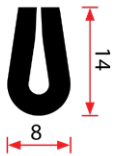
International Trucks
Locking Strip

Glazing rubbers are specially formed to seal automotive and commercial vehicle glass against the vehicle body.

SEALING: Glazing rubbers effectively seal window glass, close gaps and joints, and assist in the installation of glass panels, providing a tight fit. **WEATHER RESISTANCE:** They offer excellent weathering, wind, and watertight resistance.

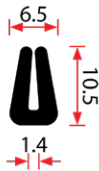
ENERGY EFFICIENCY: By preventing air and water leaks, glazing rubbers contribute to better insulation and increased energy efficiency in vehicles. **VERSATILITY:** They are suitable for various applications, including caravans, motor homes, modern and classic cars, trailers, horseboxes and sea vessels. **SUPPORT:** Glazing rubbers also provide support at pressure points. Made from **EPDM**.

OZ-R32-RL50

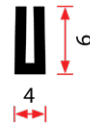


50m Roll

OZ-U559-RL30

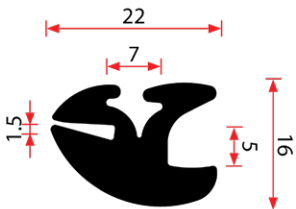


OZ-U723-RL50



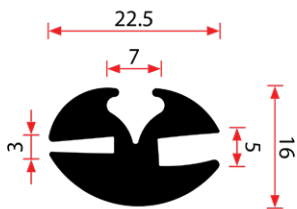
50m Roll

OZ-08-RL30



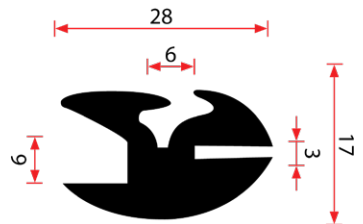
Use OZ-GL1 Locker

OZ-VAN-RL30



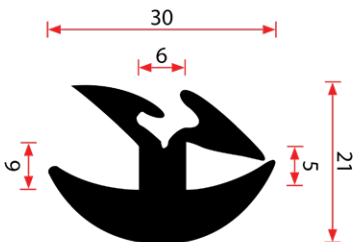
Use OZ-GL1 Locker

OZ-7782-RL30



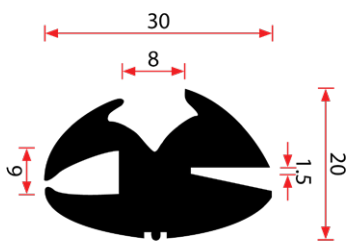
Use OZ-GL2 Locker

OZ-1059-RL30



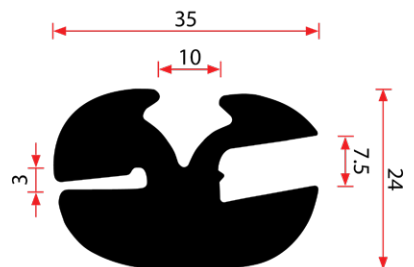
Use OZ-GL2 Locker

OZ-G5-RL30



Use OZ-GL2 Locker

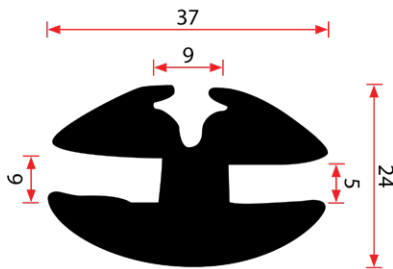
OZ-PBR-RL30



Includes locker

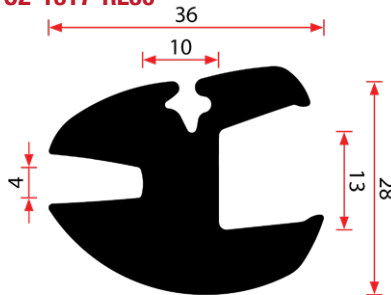
GLAZING RUBBERS - 30M ROLLS

OZ-BUS-RUB-RL30



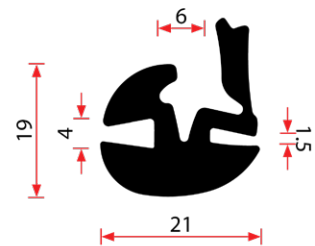
Use OZ-GL2 Locker

OZ-1317-RL30

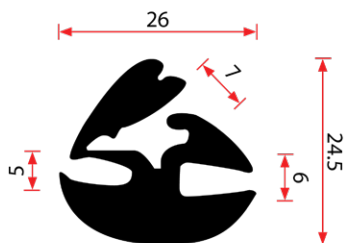


Use OZ-GL2 Locker

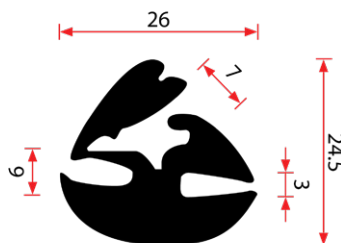
OZ-SL08-RL30



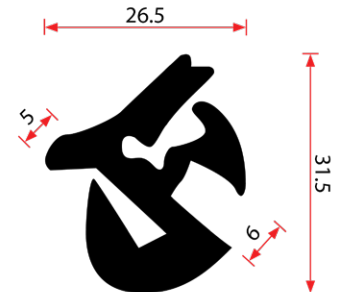
OZ-SL1059-RL30



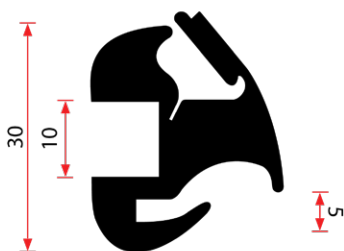
OZ-SL7782-RL30



OZ-SL265-RL30

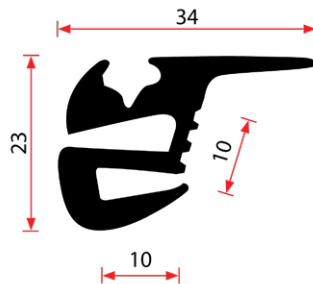


OZ-CAT10-RL30



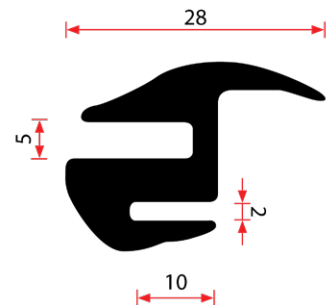
✚ Fits 10mm glass

WOB-101-RL30

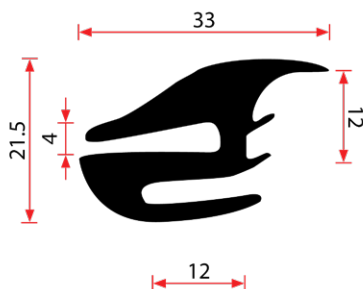


Use OZ-GL1 Locker

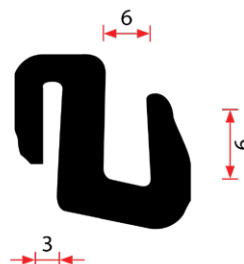
OZ-G209-RL30



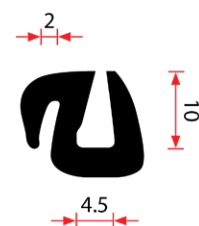
OZ-G309-RL30



OZ-G703-RL30



OZ-G704-RL30



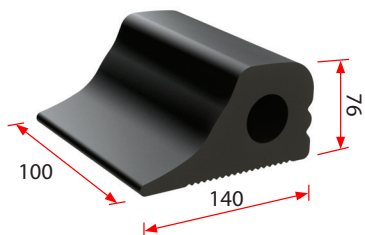
WHEEL CHOCKS

Rubber wheel chocks are used for:

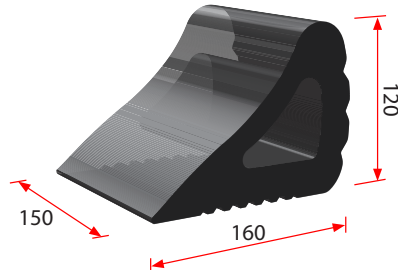
SAFETY: They are a crucial tool for preventing unintended vehicle movement. Common applications include maintenance, loading/unloading, truck/trailer parking, boat trailers, and construction sites.

Made from **BLENDED RUBBER** wheel chocks are:

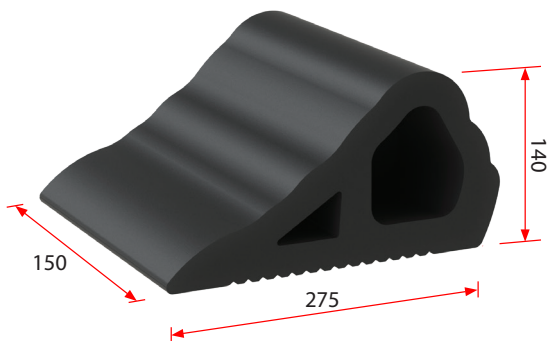
DURABLE: Their rubber material provides durability and resistance to warping, cracking, chipping, or rotting. The rubber surface and bottom grip pattern offer good grip to both the tyre and the floor surface, ensuring stability.



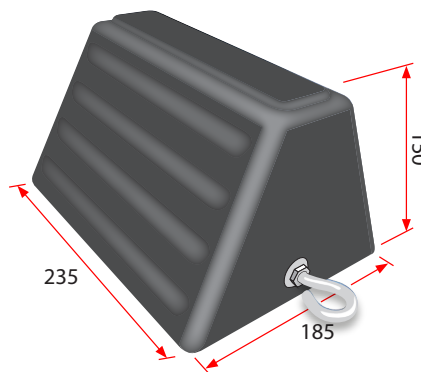
CODE	LENGTH	WIDTH	HEIGHT
WC103	140mm	100mm	76mm



CODE	LENGTH	WIDTH	HEIGHT
WC102	160mm	150mm	120mm



CODE	LENGTH	WIDTH	HEIGHT
WC104	275mm	150mm	140mm



CODE	LENGTH	WIDTH	HEIGHT
WC101	185mm	235mm	150mm



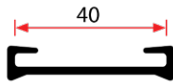
TANK STRAPS

Rubber tank straps are used to protect and secure fuel tanks and other containers.

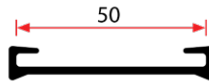
RESISTANCE: NBR tank straps are commonly used in applications requiring resistance to oil, fuel, and other petroleum-based products. **NBR** rubber has excellent resistance to oil, fuel, and chemicals, and provides high resistance to heat, weather, wear, and tear.

PROTECTION & CUSHIONING: Used under metal fuel tank straps they prevent wear and damage to the fuel tank by providing a cushioning effect.

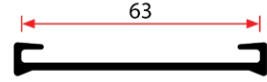
NOISE REDUCTION: They help reduce chaffing noises by providing additional grip and support for metal tank straps.



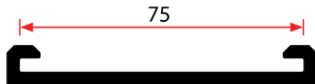
CODE	STRAP WIDTH	LENGTH
TS40N-RL50	40mm	50m



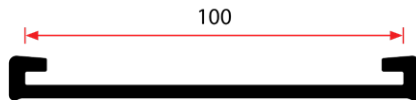
CODE	STRAP WIDTH	LENGTH
TS50N-RL50	50mm	50m



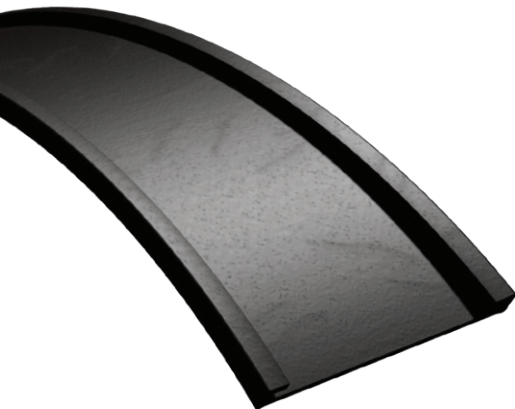
CODE	STRAP WIDTH	LENGTH
TS63N-RL50	63mm	50m



CODE	STRAP WIDTH	LENGTH
TS75N-RL25	75mm	25m



CODE	STRAP WIDTH	LENGTH
TS100N-RL25	100mm	25m



Made from fuel-resistant NBR





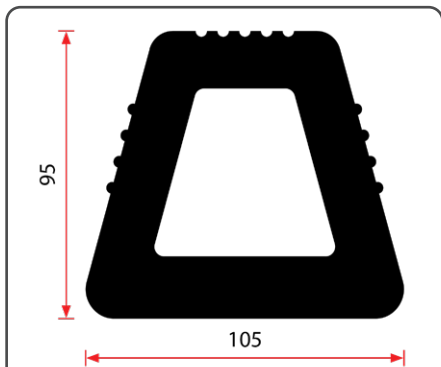
DOCKING RUBBERS - 3M LENGTHS

Docking rubbers are design to offer protection against accidental impacts by absorbing the impact. They are:

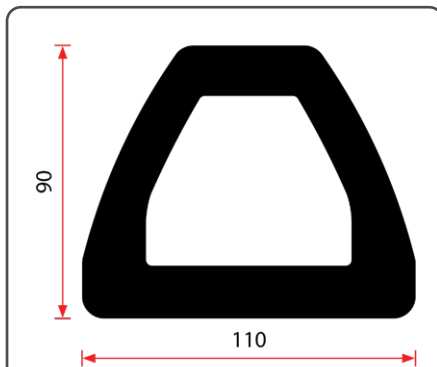
VERSATILE: They are most commonly used in loading bays or affixed to vehicles. When fixed to the ground they act as wheel stops to prevent trucks from rolling into other vehicles or structures.

ROBUST & DURABLE: They are made from highly durable **EPDM** rubber which is resistan to  High Temperatures  Most Chemicals  Cracking  Wearing  Tearing  UV

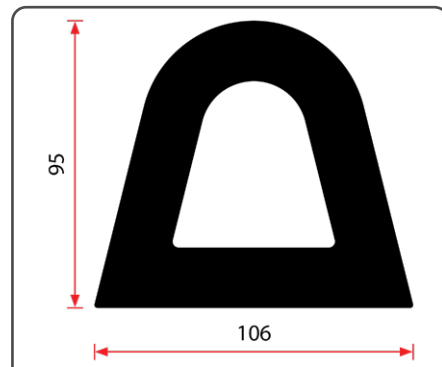
REDUCED NOISE: As well as protecting truck bumpers and loading dock structures from damage during loading and unloading operations they can also reduce noise levels.



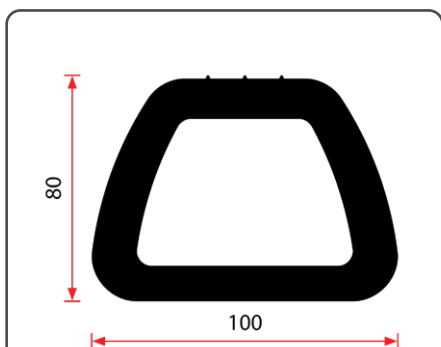
CODE	WIDTH	HEIGHT	WALL
DR554-L3	105mm	95mm	18mm



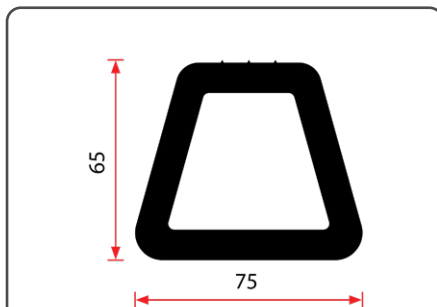
CODE	WIDTH	HEIGHT	WALL
DR100-L1	110mm	90mm	20mm
DR100-L3	110mm	90mm	20mm



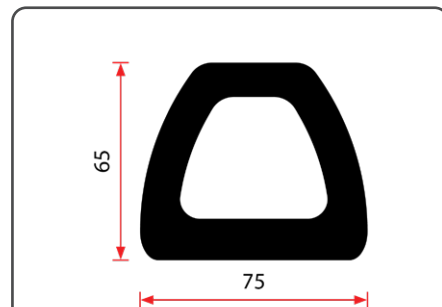
CODE	WIDTH	HEIGHT	WALL
DR110-L3	106mm	95mm	20mm



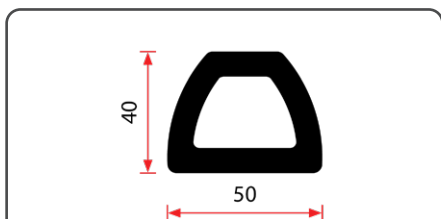
CODE	WIDTH	HEIGHT	WALL
DR442-L3	100mm	80mm	11.5mm



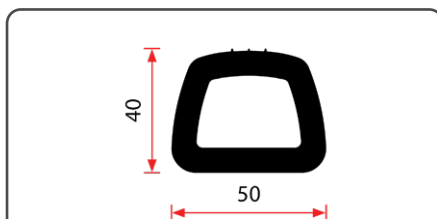
CODE	WIDTH	HEIGHT	WALL
DR441-L3	75mm	65mm	10mm



CODE	WIDTH	HEIGHT	WALL
DR75-L3	75mm	65mm	15mm



CODE	WIDTH	HEIGHT	WALL
DR50-L3	50mm	40mm	8mm



CODE	WIDTH	HEIGHT	WALL
DR440-L3	50mm	40mm	8mm

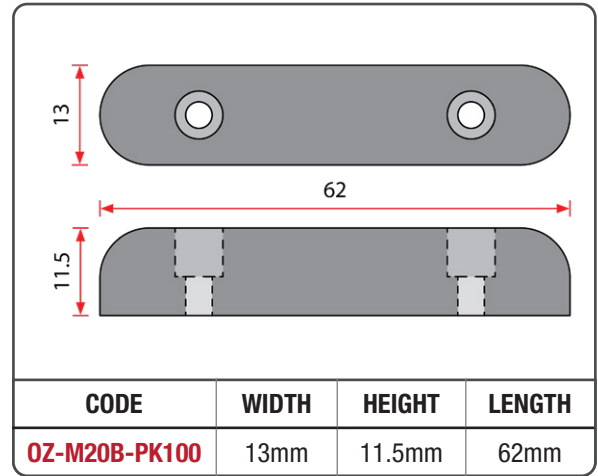
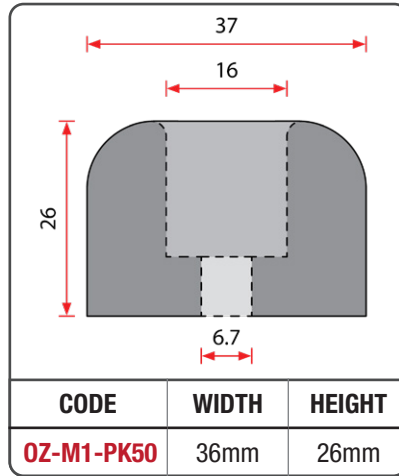
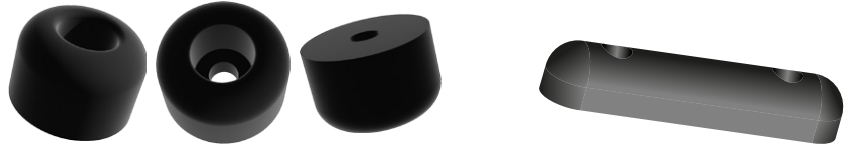
All Docking Rubbers can be Cut and Drilled to customer specifications.



BUMP STOPS / BUFFERS

Rubber bump stops are used to absorb shock and prevent damage to furniture, buildings and vehicles.

- ★ Solid moulded rubber
- ★ Hard wearing **EPDM** rubber, resistant to water absorption, ozone, sunlight aging, low temperature, and compression set
- ★ Excellent slip resistance when used as a foot
- ★ Suitable for indoor and outdoor use
- ★ Ideal for truck bumper bars and industrial applications



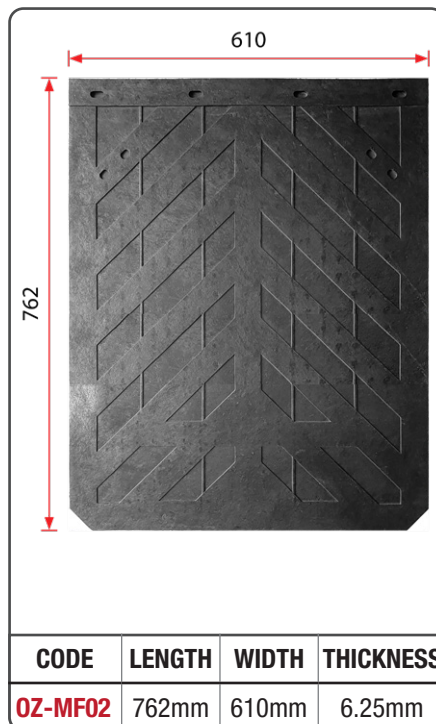
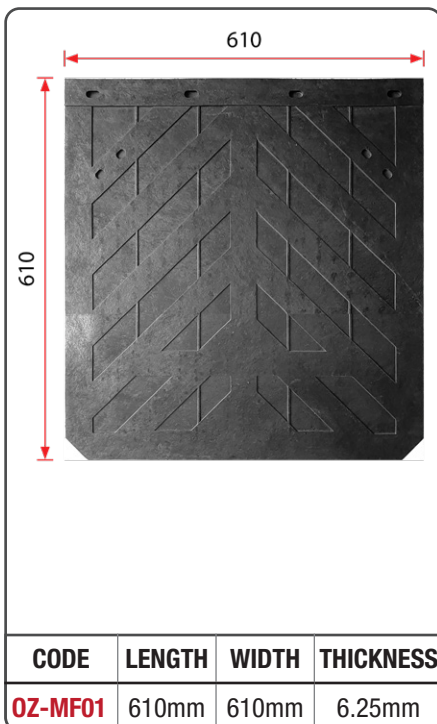
MUD FLAPS

ALP OZ mudflaps use proprietary technology and a filler free formulation to produce the toughest mud flaps in the market. The higher tear strength of our mud flaps translates to 30-40% improved performance compared with other mudflaps on the market.

- ★ High stiffness
- ★ High resistance to cutting and cracking
- ★ High tear strength
- ★ High temperature resistance
- ★ Ultra low smell
- ★ Consistent 6.25mm thickness

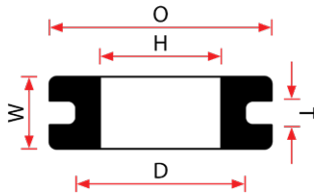


Polymer	BLENDED RUBBER + Fabric
Hardness	75-90 Shore A
Tensile Strength	>5 MPa
Elongation@ Break	>40 %
Tear	>70 kN/m
Low Temp. Flexibility	-59°C
Stiffness	Extra Rigid
Cut initiation	>100000 cycles
Smell	Low
Abrasion	88 mm ³ DIN



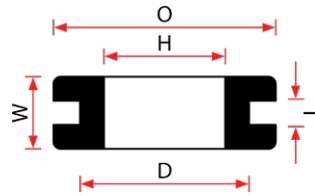
GROMMETS

ROUND EDGE



CODE	ØD	T	W	ØH	ØO
WGR0194	6.4	1.2	6.4	4.8	9.5
WGR0103	8.0	1.2	4.0	5.5	11.0
WGR0252	8.0	1.6	4.8	5.5	11.0
WGR0212	8.7	0.8	6.4	3.2	11.0
WGR1354	9.5	1.6	5.7	6.2	12.2
WGR0257	9.5	0.8	6.4	6.4	14.3
WGR0236	9.5	3.2	6.4	6.4	14.3
WGR0107	10.3	1.6	6.4	7.9	15.9
WGR0213	11.0	1.6	6.4	7.2	16.0
WGR0225	11.9	3.2	8.0	8.0	15.0
WGR0110	9.5	1.6	5.7	9.0	12.0
WGR0104	12.7	1.6	6.4	11.0	17.5
WGR0193	12.7	3.2	9.5	9.5	17.5
WGR0271	12.7	4.0	9.5	7.2	16.0
WGR0254	12.7	6.4	11.0	8.7	17.5
WGR0238	13.5	1.2	6.4	9.5	16.0
WGR0258	13.5	4.8	11.0	8.0	20.6
WGR0240	14.3	1.2	7.2	9.5	17.5
WGR0219	16.0	1.6	8.0	9.5	25.4
WGR0251	17.5	1.6	7.2	6.4	20.6
WGR0133	17.5	1.6	7.2	12.7	20.6
WGR0215	19.0	1.6	8.0	11.0	25.4
WGR0260	19.0	3.2	11.0	9.5	25.4
WGR0255	22.3	3.2	9.5	16.0	29.3
WGR0352	24.0	1.6	8.0	19.0	35.0
WGR0111	25.4	1.2	7.5	22.3	31.8
WGR0214	25.4	2.4	7.2	16.0	29.4
WGR0283	27.0	1.6	8.0	19.0	33.3
WGR0282	31.8	1.6	8.0	25.4	38.1
WGR0276	31.8	3.1	9.5	25.4	38.1
WGR0220	31.8	6.4	16.0	22.3	41.3
WGR0207	35.0	1.6	8.0	25.4	41.3
WGR0285	35.0	6.4	16.0	25.4	44.5
WGR0265	44.5	1.2	9.5	38.1	57.1

SQUARE EDGE

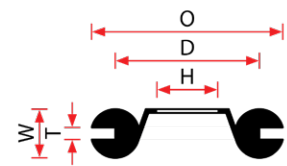


CODE	D	T	W	H	O
WGS0105	9.5	0.8	8.0	6.4	16.0
WGS0253	12.7	2.0	7.2	8.0	17.5
WGS0266	13.9	2.4	11.5	8.0	19.0
WGS0300	24.0	1.6	8.5	19.0	30.0
WGS0277	35.0	3.2	6.4	28.6	41.2
WGS0116	39.5	1.6	9.5	33.3	47.6

Grommets are made from **EPDM** rubber.



CENTRE FLANGE



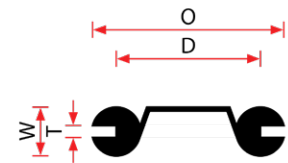
CODE	D	T	W	H	O
CFG0222	16.0	1.6	6.4	4.8	20.6
CFG0278	30.2	0.8	6.4	16.0	38.1
CFG0287	34.9	2.0	14.0	17.5	47.6

CHAIR TIP



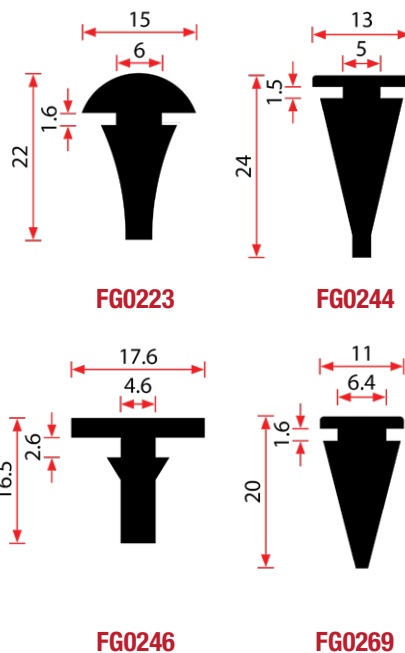
CODE	D
CT0123	13.0
CT0086	16.0
CT0090	22.0
CT0092	28.0

BLIND



CODE	D	T	W	H	O
BG0284	6.4	1.6	4.8		20.6
BG0273	8.0	1.6	4.8		11.0
BG0270	9.5	1.6	4.8		12.7
BG0108	9.5	0.8	6.4		14.3
BG0354	14.3	1.6	6.4		19.0
BG0350	12.7	1.6	6.4		17.5
BG0275	16.0	1.6	6.4		20.6
BG0274	19.0	1.6	6.4		25.4
BG0281	22.3	1.6	6.4		28.6
BG0137	25.4	1.6	8.0		31.8
BG0234	31.8	1.6	8.0		38.1
BG0235	38.1	1.6	8.0		44.5
BG0351	50.5	1.5	7.5		59.0

PLUGS



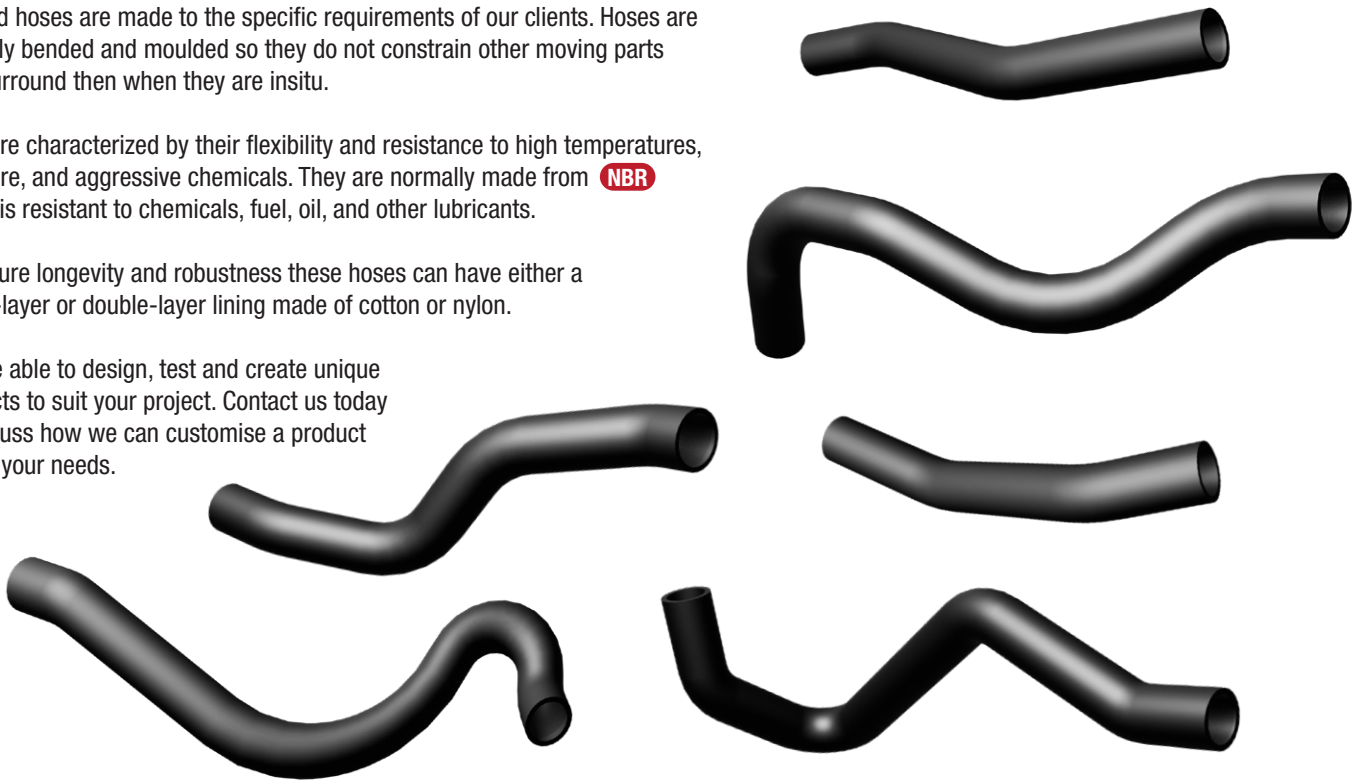
BENDED RUBBER HOSES

Bended hoses are made to the specific requirements of our clients. Hoses are typically bended and moulded so they do not constrain other moving parts that surround them when they are in situ.

They are characterized by their flexibility and resistance to high temperatures, pressure, and aggressive chemicals. They are normally made from **NBR** which is resistant to chemicals, fuel, oil, and other lubricants.

To ensure longevity and robustness these hoses can have either a single-layer or double-layer lining made of cotton or nylon.

We are able to design, test and create unique products to suit your project. Contact us today to discuss how we can customise a product to suit your needs.



MIRROR GLUE, RUBBER GLUE & PLASTIC GLUE

OZ-MG Rearview Mirror Adhesive



✳ Made in USA ✳ 10-20 seconds bond ✳ approx 200 applications ✳ 15ml (each bottle)

SK1640-MGK SikaFast-1640 Mirror Glue Adhesive Kit



OZ-RG Clear Rubber Adhesive - 30ml



✳ Great for joining moulds ✳ Low viscosity ✳ Bonding time 3-5 seconds

BMG466 Black Moulding Adhesive - 15ml



✳ Dries matt black

LOCTITE-406 Plastic & Rubber Adhesive (Clear) - 20g



✳ Rapid bond

LOCTITE-480 Plastic & Rubber Adhesive (Black) - 20g



✳ Rapid bond

SIKA SEALANTS & ADHESIVES



SKPROBK600 SikaTack® Pro Black 600ml Sausage



SDAT: 30min
✳ Auto Glass adhesive

SKPROBK600-BX20

SKTDBK600 SikaTack® Drive Black 600ml Sausage



SDAT: 60 min
(with double side airbags)
✳ Auto Glass adhesive

SKTDBK600-BX20

SK255BK600-BX20 Sikaflex® 255 Ultra Black 600ml Sausage - Box of 20



SDAT: 3hrs
(with double side airbags)
✳ Auto Glass adhesive

SK255BKCTG Sikaflex® 255 Ultra Black Cartridge



SDAT: 3hrs
(with double side airbags)
✳ Auto Glass adhesive

SK255BKCTG-BX12

SK207-100 Sika 207 Black Primer - 100ml Bottle



SK207-250 Sika 207 Black Primer - 250ml Bottle



SK207-250-BX6

SKACT-250 Sika Aktivator PRO Cleaner - 250ml Bottle



SKACT-250-BX6

SKACT-1LT Sika Aktivator PRO Cleaner - 1 Ltr Bottle



SKACT-1LT-BX4

SKBOND-350G SikaBond SprayFix Contact Adhesive - Aero 350g



SK5215FC-GUN Gun for Sika 5215 50ml Cartridges



SK5215FC-NOZ Sika 5215 Static Mixer Nozzle



Please refer to the Manufacturer's Technical Data Sheets for the recommended bonding procedures and drying times. Safe Drive Away Times (SDAT) are provided as a quick guide only.

PARBOND PRODUCTS

- ✳ For bonding door regulator channels to door glass
- ✳ For bonding door glass mounting lugs to door glass

PARBOND-GUN Parbond Dispensing Gun



PARBOND-NOZZLE Parbond Mixer Nozzle - Each



PARBOND-901 Parbond 901 Fast Cure



✳ 2 minutes to use once mixed

PARBOND-905 Parbond 905 Adhesive



✳ 5 minutes to use once mixed

BOSTIK SEALANTS & ADHESIVES



BOS7008BK600
Simson 70-08 Direct Glazing
Adhesive Black 600ml Sausage



SDAT: 1hr (with dual airbags)

BOS7008BK600-BX12

BOSPRIMG-250 Simson
PREP G PLUS Black Primer
- 250ml Bottle



BOSPREPM-250
Simson PREP M Cleaner /
Adhesion Promoter - 250ml
Bottle



BOSPREPM-250-BX6

BOSSILBKCTG
Bostik Industrial Grade
Silicone - Black



BOSSILBKCTG-BX20

BOSSILCRCTG
Bostik Industrial Grade
Silicone - Clear



BOSSILCRCTG-BX20

BOSSILWECTG
Bostik Industrial Grade
Silicone - White



BOSSILWECTG-BX20

BOS5615CTG
Bostik 5615 Synthetic Rubber
Mastic - Cartridge



✱ Windscreens secondary sealing

BOS5615CTG-BX10

BOS5614CTG
Bostik 5614 Non-Skinning
Mastic Sealer Cartridge



BOS5614CTG-BX10

BOS7005WE600-BX12
Simson 70-05 Elastic
Adhesive/Sealant 600ml
Sausage - White - Box of 12



SDAT: 1.5hrs (with dual airbags)

BOS7005BK600-BX12 Simson
70-05 Elastic Adhesive/
Sealant 600ml Sausage -
Black - Box of 12



SDAT: 1.5hrs (with dual airbags)

BOSNOZ-PK10 Bostik Nozzles
- Pkt 10



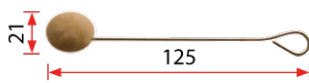
Please refer to the
Manufacturer's Technical
Data Sheets for the
recommended bonding
procedures and drying times.
Safe Drive Away Times
(SDAT) are provided as a
quick guide only.

For Safety Data Sheets on all our
potentially hazardous products
please scan the QR Code or visit
alpoz.com.au/technical-info/

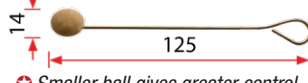


APPLICATORS, HAND WIPES & ADHESION PROMOTORS

AP5250 Daubers - Pkt 100

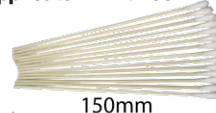


AP5275 Mini Daubers -
Pkt 100



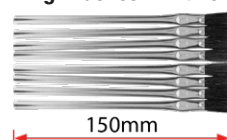
✱ Smaller ball gives greater control
✱ Better access in confined areas

DM1094 Cotton Tip
Applicator - Pkt 100



✱ Single use - avoid contamination
✱ Small size - avoid drip

T01437 Pinchweld Cleaning /
Priming Brushes - Pkt 10



✱ Made of horsehair

SKHW70
Sika Hand Wipes



✱ 70 pack ✱ Heavy Duty
✱ For removing adhesives

SKHW70-BX6

OZ-HW
Bostik Hand Wipes



✱ 70 pack

OZ-HW-BX6

3M-P94-STICK-PK5
3M Primer 94 Sticks
- Pkt 5



✱ Promotes adhesion for
double sided tapes

SC70-350
Proshield Solvent
Cleaner - 350g

✱ Improves the
bond strength
of most
self-adhesive
products
✱ quick drying
✱ residue free



CS0017
Clean and Prime
Sponges - 100pcs



✱ Contamination removal
melamine sponges

* Minimum Order Quantities apply for some products.

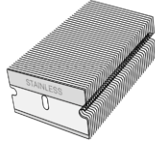
RAZOR BLADES & SCRAPERS

OZ-SB Single Edge Razor
Blades - Pkt 100



✳ Made in USA

620179 Stainless Steel Single
Edge Razor Blades - Pkt 100



AP4128 Wide Razor Scraper



✳ Ideal for removing existing ure
when preparing a glass for re-
bonding ✳ Uses #OZ-SB

AP4130 Razor Blade Holder



✳ Uses #OZ-SB

18MM RETRACTABLE SNAP OFF KNIVES & BLADES

OLFA-L1 Olfa® 18mm Short
Utility Knife



OLFA-XL2 Olfa® 18mm
Retractable Knife with Long
Handle



OLFA-OL Olfa® 18mm Knife
(OL)



OLFA-LB50 Olfa® 18mm
Snap Off Blades - Pkt 50



OLFA-LBB50 Olfa® 18mm
Black Snap Off Blades -
Pkt 50



✳ Black blades have a sharper
grind angle

L180BL Kai 18mm Snap Off
Blades - Pkt 50



✳ Made in Japan

OZ-TJ Tajima 18mm Snap Off
Blades - Pkt 50



2012BH Sterling 18mm Black
Snap Off Blades - Pkt 50



✳ Black blades have a sharper
grind angle

AP4210 Sterling 18mm Heavy
Duty Snap Off Blades - Pkt 10



9MM RETRACTABLE SNAP OFF KNIVES & BLADES

AP4220 Sterling 9mm Heavy
Duty Snap Off Utility Knife



OLFA-A1 Olfa® 9mm Mini
Utility Knife

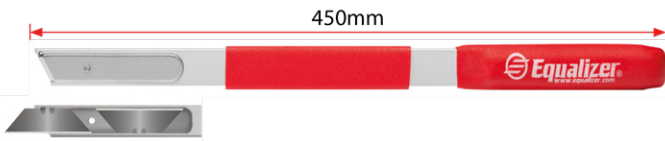


OLFA-AB50S Olfa® 9mm
Stainless Steel Snap Blades
- Pkt 50



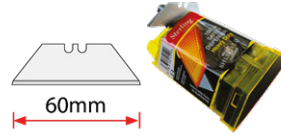
TRIMMING KNIVES & BLADES

QS358 Equalizer Trimming Long Knife - 450mm

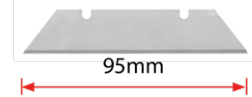


Uses #OZ-BLADES or extended length #ULB582 replacement blades.

OZ-BLADES Heavy Duty Trimming Knife Blades - Pkt 100



ULB582 Extra Long Trimming Knife Blades - Pkt 10



✦ For use in QS358 long knife

AP4140 Fixed Trimming Knife



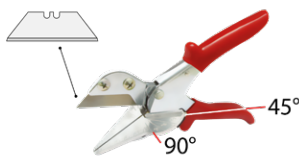
K3038 Turbo Trimming Knife



- ✦ Slide-lock retractable blade
- ✦ 5-blade storage compartment
- ✦ Automatic blade loading

MITRE CUTTERS

MBS060 Mitre Blade Cutter



✦ Uses OZ-BLADES blades.

BST060 Heavy Duty Blade Cutter



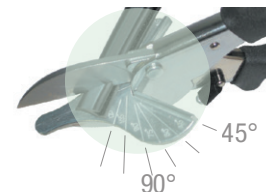
✦ Uses OZ-BLADES blades.

AP4258 Universal Cutter



✦ Fixed blade cutter for rubber, plastic and nozzles.

When mouldings require an angled cut these mitre cutters help you achieve an accurate cut for a professional finish.



AP4255 Mitre Cutter



29701 Black Panther Snips - 185mm

- ✦ Hi-tensile stainless steel serrated edge blade.
- ✦ Cut wire, rubber and other light gauge materials.



V-NOTCH CUTTER

VNT306 Equalizer V-Notch Cutter



- ✦ Make a perfect V-Notch in the nozzle.
- ✦ Safe and effective.
- ✦ Notch measures 19mm (L) x 11mm (W)

CLEANING PRODUCTS

OZ-RAGS-10KG Rags



- ✦ 10kg Hospital blanket rags
- ✦ 40 x 40 x 20cm compressed bag

Visit alpoz.com.au to see our full range of tools and consumables.



LOCKING STRIP TOOLS

LS758 Multi Locking Strip Tool



✳ Fits most rubber locking strips on the market ✳ Suits 7 - 16mm

BRT600 Locking Strip Tool with Interchangeable Wires



PA1348 Locking Strip Tool with Interchangeable Wires



AP3210 T-Head Locking Strip Tool



AP3200 Small Windscreen Locking Strip Tool



Hole: 18 x 14mm

AP6021 Self Locking Rubber Insert Tool



PT697 Locking Tool For Self-Locking Rubber Gaskets



RT752 Rope Insert Tool

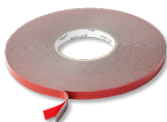


VHB DOUBLE SIDED TAPE

SK0633 VHB Grey Double Sided Tape - 0.8t x 6w - 33m Roll



SK1233 VHB Grey Double Sided Tape - 0.8t x 12w - 33m Roll



SK2433 VHB Grey Double Sided Tape - 0.8t x 24w - 33m Roll



3MGPH22-5M 3M Grey Multi-Purpose Dash-Cam VHB Glazing Foam Tape - 1.6t x 22w - 5m Roll

- ✳ Ideal for bonding Dash Cams and other accessories to the windscreen.
- ✳ Fast and easy to use ✳ Permanent bonding
- ✳ High strength and long-term durability
- ✳ Excellent high temperature resistance
- ✳ Good balance of strength and conformability
- ✳ High initial tackiness



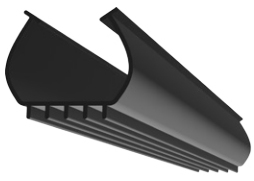
AM1011HC-6.5M High Tack Conformable Grade VHB Tape - 1.1t x 22w - 6.5m Roll

- ✳ Ideal for for large vehicles like Trucks and Buses ✳ Double coated ✳ Highly conformable acrylic foam ✳ Excellent adhesion ✳ Excellent for slippery, heavily coated LSE (low surface energy) surfaces ✳ No need for a primer
- ✳ Excellent shear strength & initial strength
- ✳ Long term stability and adaptability to the bonding surface



ADDITIONAL PRODUCTS & SERVICES

★ PVC Roller Door Seals



★ Custom Cutting & Drilling



★ Pelmet Extrusions



★ Moulded Components



★ Water Jet Cut Gaskets



★ Custom Extrusions



★ Self-Adhesive Taping



★ Tie-Down Straps



★ Rubber Ring Seals for Pipes



★ Thermal and Acoustic Insulation



NOTES

.....

.....

.....

.....

.....

.....

.....

.....

.....

.....

.....

.....

.....

.....

.....

.....

.....

.....

.....

.....

.....

Established in 1984, ALP Group has been committed to delivering excellence in polymer-based sealing solutions. Today ALP stands as India's leading manufacturer of sealing systems for automotive, industrial, and consumer applications. With a strong presence across diverse sectors—including automotive, construction, consumer products, railways, and door/window systems—ALP's cutting-edge R&D and Engineering team continuously innovates to develop advanced sealing technologies, primarily using rubber as a core material. ALP pioneered the introduction of EPDM weatherstrips in India and has since expanded into PVC thermoplastics, Santoprene products, and insulation rubber sheets and tubes for HVAC & R applications. From indigenous compound formulation to final product manufacturing, ALP provide expert, cost effective, and fully integrated sealing solutions tailored to industry needs.



INNOVATION

At ALP innovation is at the heart of everything. ALP foster a culture that encourages the free flow of ideas among its skilled professionals, driving creativity and continuous improvement. By blending a scientific mindset with advanced engineering expertise, ALP develops high-quality products that deliver outstanding performance and reliability. Commitment to customer satisfaction fuels its pursuit of integrated technologies and smarter solutions—ensuring we not only meet expectations but consistently exceed them.

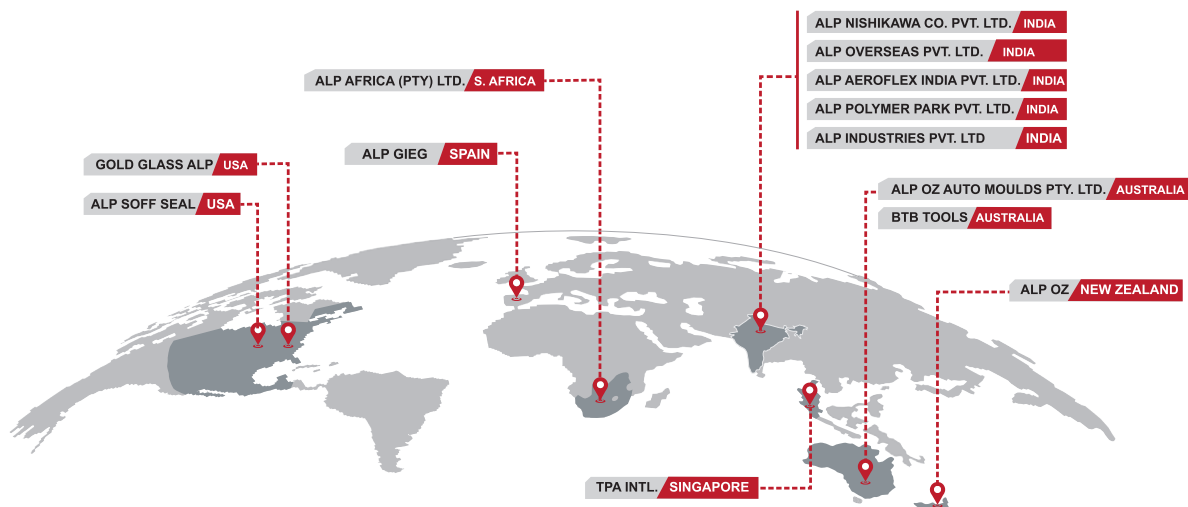
DESIGN & DEVELOPMENT

The dedicated team of 25 highly skilled engineering design professionals is one of ALP's greatest assets. With over 15 years of product development expertise, they bring unmatched precision and innovation to every project. Leveraging advanced design tools ALP's state-of-the-art design stations are fully equipped to deliver customized solutions with quick turnaround times. Whether it's prototyping or full-scale development, the team ensures every product meets the highest standards of quality and performance.

TESTING & EVALUATION

At ALP, quality is non-negotiable. Every product undergoes rigorous testing and evaluation to ensure it meets the highest standards of performance and reliability. Utilizing state-of-the-art testing equipment, we assess a wide range of properties including water absorption, material thickness, specific gravity, cracking resistance, hardness, wear resistance, viscosity, melting temperature, thermal insulation, and molecular composition. This comprehensive approach guarantees maximum utility, safety, and customer satisfaction.

ALP – A GLOBAL FAMILY OF COMPANIES



ALP – SUPPLYING KEY BRANDS

