

Dent Repair

POPULAR

DF505 Spitznagel MAXI Pulling System



SLIDE HAMMER



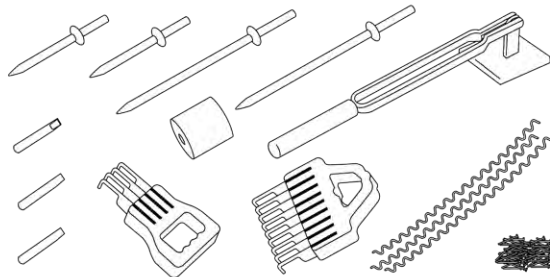
LEVERAGE PULLER



PIN WELD & SHRINK



WIGGLE WIRE FOR BEAR CLAWS



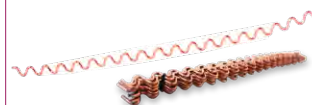
- ✦ The MAXI is a high quality dent pulling system that saves time, improves productivity and produces a cleaner, better repair
- ✦ 240 Volt Single Phase ✦ Includes storage cabinet and pulling accessories

MEC090 Magnetic Ground Earth Clamp for DF505



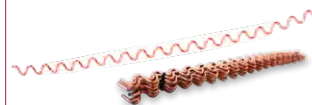
- ✦ High-strength magnet attaches to ground cable ✦ Copper stud gives longer life & higher efficiency

WW16 Wiggle Wire 1.6mm - Pkt 60



Spacing of this wiggle wire matches that of WK930 and WK932 bear claws

WW20 Wiggle Wire 2.0mm - Pkt 25



WK930 100mm Bear Claw - 4 Finger



- ✦ Designed to use with our WW16 or WW20 Wiggle Wire for pulling out smaller creased panels

WK932 150mm Bear Claw - 9 Finger



- ✦ Use the larger Claw for heavier creased panels ✦ Use with our WW16 or WW20 Wiggle Wire

WK931C Replacement Claw For WK930 & WK932



DF503KEM Brass Magnetic Key Electrode for DF505



- ✦ Gives the DF505 the ability to weld-on pull washers to panels

DF20250 Stud Weld Pins 2.0mm - Pkt 250



DF26250 Stud Weld Pins 2.6mm - Pkt 250



BMSW01 Straight Weld-On Pull Washer - Pkt 25



BMTW02 Twisted Weld-On Pull Washer - Pkt 25



DF503 Short Welding Rod for DF505



DF503L Long Welding Rod for DF505



DF503T Trigger Switch for DF505



BMSTARW Copper Star Pull Washers - Pkt 5

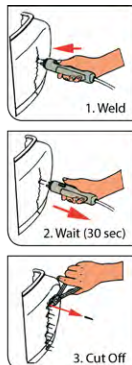


Dent Repair

HTW300DX Deluxe Hot Stapler Plastic Repair Kit

- ✦ Easy and Quick Operation - 10 Seconds to Heat ✦ Strong against Shock and Twist after Welding
- ✦ Stainless Heating Pins used ✦ No Need to Replace Bumpers - Save on Spare Parts

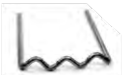
Deluxe Model includes:
✦ Extra Long Heavy Duty Leads ✦ A variety of staple types are included with the kit



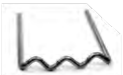
HTW100 Hot Stapler Plastic Repair Kit



HRS16 0.6mm Flat Hot Staples - Pkt 100



HRS18 0.8mm Flat Hot Staples - Pkt 100



HRS26 0.6mm Wave Hot Staples - Pkt 100



HRS28 0.8mm Wave Hot Staples - Pkt 100



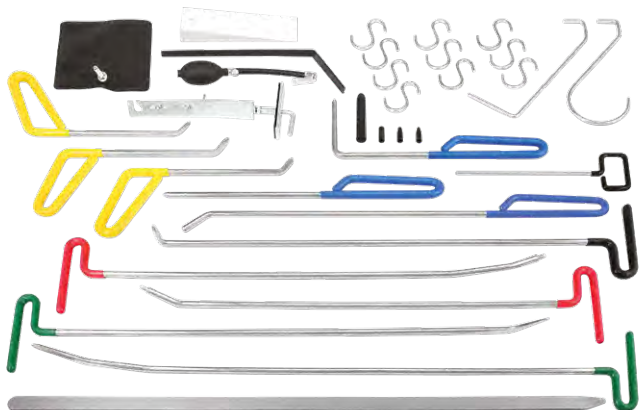
HRS38 0.8mm Corner Hot Staples - Pkt 100



HRS46 0.6mm Corner Outside Hot Staples - Pkt 100



PDRK33 Paintless Dent Removal Kit - 33 Pc



- ✦ Comprehensive kit designed to massage cosmetic damage including door dings and hail damage ✦ Supplied in a robust carry case

VSH125 Vacuum Dent Puller Slide-Hammer Kit - 3 Cups



- ✦ Quick results without needing to remove interior trims to gain access behind the panel ✦ Avoid the risk of damage to the vehicle's interior components
- ✦ The soft rubber suction cup helps avoid further damage to the painted surface
- ✦ Paintless dent removal applications

PDR2402 PDR Line Board



- ✦ Use with PDR repair tools

HG3010 PDR Hot Glue Gun - 240V



- ✦ Used for temporarily fixing plastic PDR pull tabs

PDGLU-10 10mm PDR Glue Sticks - Pkt 10



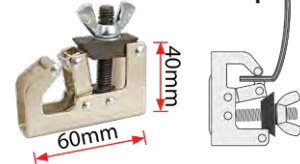
- ✦ Replacement glue sticks used with HG3010

WH9601 G-Handle Suction Cup - 75mm

- ✦ Flexible rubber pad that can be used to pull small dents



WAC100 Wheel Arch Clamp



SWP020 Plug Weld Pliers



- ✦ Copper alloy base plate prevents weld penetration to the base plate

PA804A 4 Ton Collision Repair Porto Power Kit



Includes:

- ✦ Heavy duty hand pump
- ✦ Hydraulic spreader / wedge
- ✦ Extension tubes
- ✦ Couplings - flat base, v-base, wedge head, plunger toe, cylinder toe, rubber head & serrated head

- ✦ Storage box included

NEW

K226 Smart Clamp - 2.5 Ton



✳ 3 way pulling ✳ 35mm Jaw

K301 360° I-Bolt Puller Clamp



✳ Fix into chassis rail holes

PCTAK Tak-Weld Clamp Set Incl 1 Clamp & 2 Tak-Weld Plates



PCPLT38 Tak-Weld Pulling Plate - 38mm



✳ Use with PCTAK

PCPLT76 Tak-Weld Pulling Plate - 76mm



✳ Use with PCTAK

K218 Curved Clamp - 5 Ton



✳ 45mm Jaw

K212 Two Way Puller - 7 Ton



✳ 100mm Jaw

PC402 Scissor Clamp - 3 Ton



✳ 40mm Jaw

K211 Maxi Scissor Clamp - 5 Ton



✳ 70mm Jaw

K214 Self Clamping Wedge Clamp - 10 Ton



✳ 80mm Jaw

K222 Universal Clamp - 6 Ton



✳ 55mm Jaw

✳ NEW ✳

K228 Hinge Bender



PC301 Tota Long Nose Clamp - 2 Ton



✳ 30mm Jaw

PC302 Tota Mini 2-Way Pull Clamp - 3 Ton



✳ 35mm Jaw

PC102NN Tota 2-Way Box Clamp - 3 Ton



✳ 35mm Jaw

PC601N Tota Right Angled Pull Clamp - 3 Ton



✳ 120mm Jaw

20222 HandyPull Kit - Plate & Eye Bolt



✳ NEW ✳

K231 Pulling Sling - 3 Ton



K223 Floor Pot with Dyna Bolts



K215 Chain Lock



20033 Quarter Puller - 150mm



✳ Hooks under wheel arch

✳ NEW ✳

QP300 Large Quarter Pulling Clamp



✳ Hooks under wheel arch

✳ NEW ✳

PWC600 Panel Welding Clamp Set - 6 Pc

Kit Contents:

- ✳ Sheet Metal Angle Jaws
- ✳ Straight Jaws
- ✳ Sheet Metal Wide Double Curved Jaws
- ✳ Sheet Metal Wide Curved Jaws
- ✳ 90° Angled Jaws
- ✳ Sheet Metal Wide Flat Jaws

✳ Conveniently packaged in a blow mould case.

